

A

# ये लो SBI CLERK का पेपर

**21 FEB**  
**07 PM**



**QUANT**  
**ENGLISH**  
**REASONING**

**PAPER**  
**HACKED**



# QUANTS

1

Find out the missing term in the given number series?

दी गई संख्या श्रृंखला में लुप्त पद ज्ञात कीजिए?

100, 101, 103, 109, 133, ?

A 253

B 252

C 100

D 300

E None of these

2

Find out the missing term in the given number series?

दी गई संख्या श्रृंखला में लुप्त पद ज्ञात कीजिए?

?, 189, 176, 193, 172, 197

A 150

B 152

C 180


D 200

E None of these

3

Find out the missing term in the given number series?  
दी गई संख्या श्रृंखला में लुप्त पद ज्ञात कीजिए?

8, 224, 249, 313, 322, ?

- 
- A 333
  - B 330
  - C 300
  - D 250
  - E None of these

4

Find out the missing term in the given number series?  
दी गई संख्या श्रृंखला में लुप्त पद ज्ञात कीजिए?

21, ?, 135, 544, 2725, 16356

A 53

B 42

C 44

D 30

E None of these

5

Find out the missing term in the given number series?

दी गई संख्या श्रृंखला में लुप्त पद ज्ञात कीजिए?

200, 193, 179, 158, ?, 95

A 124

B 115

C 130

D 160

E None of these

6

In each of the given number series only one number is wrong. Find out that wrong number.

दी गई प्रत्येक संख्या श्रृंखला में केवल एक संख्या गलत है। वह गलत संख्या ज्ञात कीजिए।

4, 2, 2, 3, 6, 15, 50

A 4

B 2

C 15

D 50

E 3

7

In each of the given number series only one number is wrong. Find out that wrong number.

दी गई प्रत्येक संख्या श्रृंखला में केवल एक संख्या गलत है। वह गलत संख्या ज्ञात कीजिए।

3, 43, 81, 115, 143, 162

A 43

B 81

C 115

D 142

E 162

8

In each of the given number series only one number is wrong. Find out that wrong number.

दी गई प्रत्येक संख्या श्रृंखला में केवल एक संख्या गलत है। वह गलत संख्या ज्ञात कीजिए।

1.7, 3, 5.6, 9.5, 14.7, 21.8

A 21.8

B 14.7

C 3

D 1.7

E 9.5

9

In each of the given number series only one number is wrong. Find out that wrong number.

दी गई प्रत्येक संख्या श्रृंखला में केवल एक संख्या गलत है। वह गलत संख्या ज्ञात कीजिए।

3, 4, 8, 24, 88, 364, 1368

A 364

B 8

C 3

D 24

E 1368

10

In each of the given number series only one number is wrong. Find out that wrong number.

दी गई प्रत्येक संख्या श्रृंखला में केवल एक संख्या गलत है। वह गलत संख्या ज्ञात कीजिए।

11, 21, 8 , 25, 6, 29

A 11

B 21

C 8

D 6

E None of these

11

What will come in place of the question mark (?) in the following questions?  
निम्नलिखित प्रश्नों में प्रश्नवाचक चिन्ह (?) के स्थान पर क्या आएगा?

$$16.67\% \text{ of } 90 + 75\% \text{ of } 400 - 5\% \text{ of } 220 = ?$$

A 345

B 304

C 309

D 312

E 322

12

What will come in place of the question mark (?) in the following questions?  
निम्नलिखित प्रश्नों में प्रश्नवाचक चिन्ह (?) के स्थान पर क्या आएगा?

$$(33.33\% \text{ of } 660) - (14.28\% \text{ of } 140) = ?$$

A 180

B 200

C 220

D 240

E None of these

13

What will come in place of the question mark (?) in the following questions?  
निम्नलिखित प्रश्नों में प्रश्नवाचक चिन्ह (?) के स्थान पर क्या आएगा?

$$\sqrt{(43)^2 - 38 \times 26 - 20} = ?$$

A 31

B 29

C 19

D 39

E 21

14

What will come in place of the question mark (?) in the following questions?  
निम्नलिखित प्रश्नों में प्रश्नवाचक चिह्न (?) के स्थान पर क्या आएगा?

$$? \text{ of } \frac{3}{4} \text{ of } \frac{5}{7} \text{ of } 1715 = 735$$

A 3/5

B 4/5

C 2/3

D 2/5

E 4/7

15

What will come in place of the question mark (?) in the following questions?  
निम्नलिखित प्रश्नों में प्रश्नवाचक चिन्ह (?) के स्थान पर क्या आएगा?

$$(0.8)^3 \times 800 \div 8000 \text{ of } (0.8)^2 = ?$$

A 8

B 0.8

C 0.008

D 0.08

E None of these

16

What will come in place of the question mark (?) in the following questions?  
निम्नलिखित प्रश्नों में प्रश्नवाचक चिन्ह (?) के स्थान पर क्या आएगा?

$$444 \div 18 \times 216 - ?^2 = 72^2$$

A 12

B 21

C 20

D -12

E Option A and D

17

What will come in place of the question mark (?) in the following questions?

निम्नलिखित प्रश्नों में प्रश्नवाचक चिन्ह (?) के स्थान पर क्या आएगा?

$$(69 \times 28) \div 21 + 1225 \div 25 = ?$$

A 180

B 109

C 134

D 133

E None of these

18

What will come in place of the question mark (?) in the following questions?

निम्नलिखित प्रश्नों में प्रश्नवाचक चिन्ह (?) के स्थान पर क्या आएगा?

$$1\frac{2}{5} + 4\frac{3}{10} = ? + 4\frac{2}{5}$$

(a)  $1\frac{3}{10}$

(b)  $2\frac{3}{5}$

(c)  $4\frac{3}{5}$

(d)  $5\frac{3}{5}$

(e)  $3\frac{3}{5}$

19

What will come in place of the question mark (?) in the following questions?  
निम्नलिखित प्रश्नों में प्रश्नवाचक चिन्ह (?) के स्थान पर क्या आएगा

$$48\% \text{ of } ? + 45\% \text{ of } 600 = 19^2 + \sqrt{841}$$

(a) 250

(b) 150

(c) 200

(d) 225

(e) 175

20

What will come in place of the question mark (?) in the following questions?  
निम्नलिखित प्रश्नों में प्रश्नवाचक चिन्ह (?) के स्थान पर क्या आएगा

$$14\frac{2}{7}\% \text{ of } 406 + 19 \times 2 = ? \times 4$$

A 42

B 15

C 12

D 26

E 24

21

What will come in place of the question mark (?) in the following questions?  
निम्नलिखित प्रश्नों में प्रश्नवाचक चिन्ह (?) के स्थान पर क्या आएगा?

$$2^4 \times 250 \div 5^3 \times 25 = 32 \times 5^?$$

(a) 3

(b) 2

(c) 5

(d) 1

(e) 0

22

What will come in place of the question mark (?) in the following questions?  
निम्नलिखित प्रश्नों में प्रश्नवाचक चिन्ह (?) के स्थान पर क्या आएगा?

$$2691 \div 13 + 9 = ?^3$$

(a) 4

(b) 11

(c) 6

(d) 15

(e) 7

23

What will come in place of the question mark (?) in the following questions?  
निम्नलिखित प्रश्नों में प्रश्नवाचक चिन्ह (?) के स्थान पर क्या आएगा?

$$\sqrt{125} \times \sqrt{720} = ?$$

- (a)  $100\sqrt{3}$
- (b) 300
- (c)  $75\sqrt{3}$
- (d) 140
- (e) 150

24

What will come in place of the question mark (?) in the following questions?  
निम्नलिखित प्रश्नों में प्रश्नवाचक चिन्ह (?) के स्थान पर क्या आएगा?

$$\frac{11.11\% \text{ of } 900 + 180}{?} = 40$$

- (a) 7
- (b) 4
- (c) 6
- (d) 8
- (e) None of these

25

What will come in place of the question mark (?) in the following questions?  
निम्नलिखित प्रश्नों में प्रश्नवाचक चिन्ह (?) के स्थान पर क्या आएगा?

$$\frac{32 \times 3^6}{81 \times 4^2} = \sqrt{?}$$

- (a) 441
- (b) 324
- (c) 144
- (d) 529
- (e) 400

26

Find the approximate value of (?) in the following questions.

$$44.04\% \text{ of } 349.98 + 205.01\% \text{ of } 140.01 = (?)^2$$

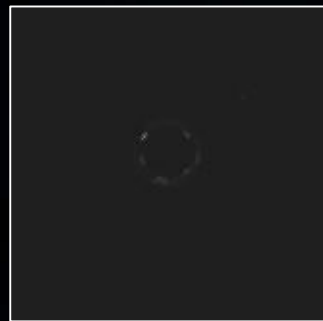
(a) 29

(b) 361

(c) 19

(d) 441

(e) 21



27

Find the approximate value of (?) in the following questions.

$$\frac{?}{14.29} + (11.77)^2 - \sqrt{1936.31} = (16.08)^2$$

(a) 2164

(b) 2196

(c) 2118

(d) 2184

(e) 2124

28

Find the approximate value of (?) in the following questions.

$$17.99 + \frac{1}{2.99} \text{ of } 26.99 - 1.99 = ?$$

(a) 25

(b) 29

(c) 24

(d) 28

(e) 30

29

Find the approximate value of (?) in the following questions.

$$\sqrt[2]{\frac{24.99}{4}} \div \sqrt[3]{\frac{125.08}{8}} = ?$$

(a) 2

(b) 1

(c) 3

(d) 5

(e) 10

30

Find the approximate value of (?) in the following questions.

$$51.99 \div \frac{1}{1.99} \text{ of } 7.99$$

- (a) 21
- (b) 11
- (c) 13
- (d) 15
- (e) 5

31



Ploughing cost of a rectangular field is Rs 288 at the rate of Rs 3 per square meter. Length of the field is 4 meters more than the width of field.

Quantity I: Length of rectangular field.

Quantity II: 12 meters.

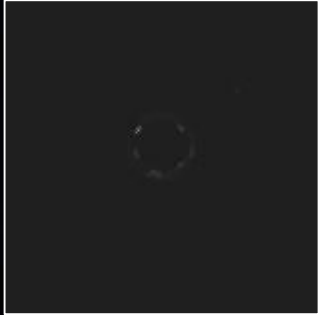
एक आयताकार खेत की जुताई की लागत 3 रुपये प्रति वर्ग मीटर की दर से 288 रुपये है। मैदान की लंबाई मैदान की चौड़ाई से 4 मीटर अधिक है

मात्रा I: आयताकार मैदान की लंबाई

मात्रा II: 12 मीटर

- (a) Quantity I < Quantity II
- (b) Quantity I > Quantity II
- (c) Quantity I  $\geq$  Quantity II
- (d) Quantity I  $\leq$  Quantity II
- (e) Quantity I = Quantity II or No relation

32



If a speed of boat is 500% more than the speed of a current.

Quantity I – 'x' : If boat can travel a distance of 63 km in 3 hr, in downstream then 'x' is the speed of the boat in upstream (km/hr).

Quantity II – 15 km/hr

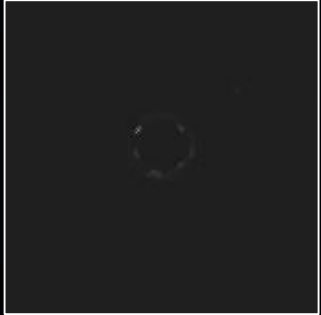
यदि नाव की गति धारा की गति से 500% अधिक है

मात्रा I - 'x': यदि नाव धारा के अनुकूल 3 घंटे में 63 किमी की दूरी तय कर सकती है तो धारा के प्रतिकूल नाव की गति 'x' है (किमी/घंटा)

मात्रा II – 15 किमी/घंटा

- (a) Quantity I < Quantity II
- (b) Quantity I > Quantity II
- (c) Quantity I  $\geq$  Quantity II
- (d) Quantity I  $\leq$  Quantity II
- (e) Quantity I = Quantity II or No relation

33



In a village there are 60% males and rest are females. 30% of total male are illiterate and 25% of total female are illiterate. Number of illiterate males is 1152.

Quantity I: Literate females in the village.

Quantity II: 1940

एक गाँव में 60% पुरुष हैं और शेष महिलाएँ हैं। कुल पुरुषों में से 30% निरक्षर हैं और कुल महिलाओं में से 25% निरक्षर हैं। निरक्षर पुरुषों की संख्या 1152 है।

मात्रा I: गाँव में साक्षर महिलाएँ

मात्रा II: 1940

- (a) Quantity I < Quantity II
- (b) Quantity I > Quantity II
- (c) Quantity I  $\geq$  Quantity II
- (d) Quantity I  $\leq$  Quantity II
- (e) Quantity I = Quantity II or No relation

34

In each of these questions, two equations (i) and (ii) are given. You have to solve both the equations and give answer.

इनमें से प्रत्येक प्रश्न में, दो समीकरण (i) और (ii) दिए गए हैं। आपको दोनों समीकरणों को हल करना होगा और उत्तर देना होगा

I.  $x^2 - 13x + 40 = 0$

II.  $2y^2 - y - 15 = 0$

(a) if  $x > y$

(b) if  $x \geq y$

(c) if  $x < y$

(d) if  $x \leq y$

(e) if  $x = y$  or no relation can be established between  $x$  and  $y$ .

35

In each of these questions, two equations (i) and (ii) are given. You have to solve both the equations and give answer.

इनमें से प्रत्येक प्रश्न में, दो समीकरण (i) और (ii) दिए गए हैं। आपको दोनों समीकरणों को हल करना होगा और उत्तर देना होगा

$$(i) (x + 3)^2 = 1$$

$$(ii) y^3 = 8$$

(a) if  $x > y$

(b) if  $x \geq y$

(c) if  $x < y$

(d) if  $x \leq y$

(e) if  $x = y$  or no relation can be established between  $x$  and  $y$ .



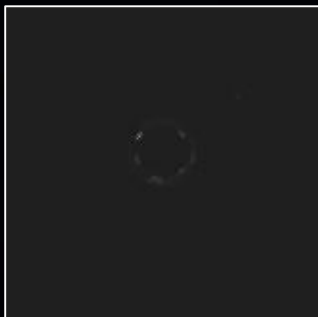
## PAPER HACKED (MOST EXPECTED QUESTIONS FOR SBI CLERK)

Given table shows the data of population in 5 different parks. Study the data carefully and answer the questions.

दी गई तालिका 5 अलग-अलग पार्कों में जनसंख्या का डेटा दिखाती है। डेटा का ध्यानपूर्वक अध्ययन करें और प्रश्नों के उत्तर दें।

(Total population = Male population + Female population)

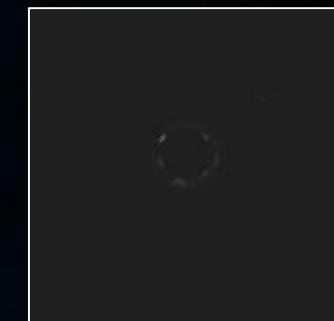
Parks	Total Population	Female population
A	400	150
B	500	200
C	700	350
D	800	450
E	900	500



36

What is average of male population in park B, C and D?

पार्क बी, सी और डी में पुरुष जनसंख्या का औसत क्या है?



PARKS	TOTAL POPULATION	FEMALES	MALES
A	400	150	250
B	500	200	300
C	700	350	350
D	800	450	350
E	900	500	400

Parks	Total Population	Female population
A	400	150
B	500	200
C	700	350
D	800	450
E	900	500

(a) 343.33

(b) 313.33

(c) 323.33

(d) 333.33

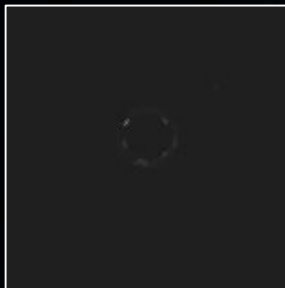
(e) 353.33

**37** By what percent female population in park D is more or less than the male population in park E?

पार्क D में महिला जनसंख्या पार्क E में पुरुष जनसंख्या से कितने प्रतिशत अधिक या कम है?

PARKS	TOTAL POPULATION	FEMALES	MALES
A	400	150	250
B	500	200	300
C	700	350	350
D	800	450	350
E	900	500	400

- (a) 15%
- (b) 9.09%
- (c) 11.11%
- (d) 14.28%
- (e) 12.5%



Parks	Total Population	Female population
A	400	150
B	500	200
C	700	350
D	800	450
E	900	500

38 What is ratio of male population in park A & D together to female population in park B & E together?

पार्क A और D में मिलाकर पुरुष जनसंख्या का पार्क B और E में मिलाकर महिला जनसंख्या से अनुपात क्या है?

PARKS	TOTAL POPULATION	FEMALES	MALES
A	400	150	250
B	500	200	300
C	700	350	350
D	800	450	350
E	900	500	400

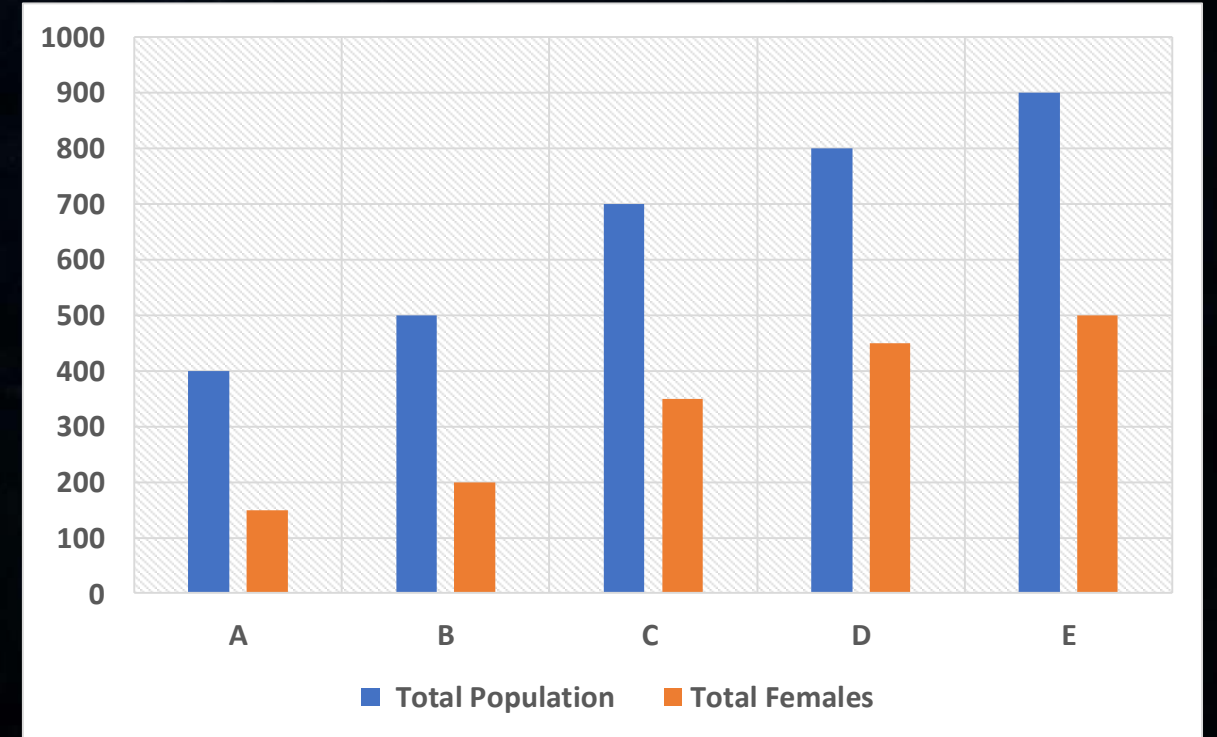
(a) 6 : 7

(b) 1 : 1

(c) 7 : 6

(d) 5 : 6

(e) 5 : 7

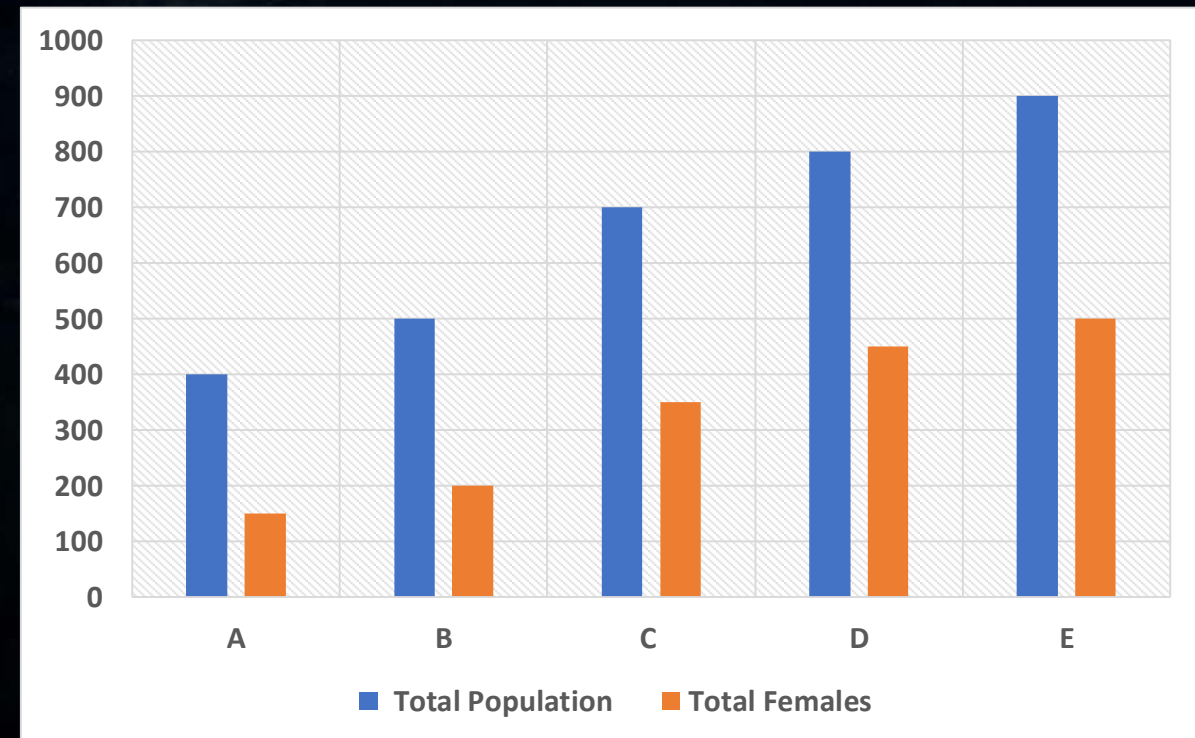


39 In Park X, total population is 100 more than the total population of E, and its Male population is 10% more than the female population of Park D. Find its Female population.

पार्क X में, कुल जनसंख्या E की कुल जनसंख्या से 100 अधिक है, और इसकी पुरुष जनसंख्या पार्क D की महिला जनसंख्या से 10% अधिक है। इसकी महिला जनसंख्या ज्ञात करें

- (a) 600  
 (b) 404  
 (c) 606  
 (d) none of these  
 (e) 505

PARKS	TOTAL POPULATION	FEMALES	MALES
A	400	150	250
B	500	200	300
C	700	350	350
D	800	450	350
E	900	500	400

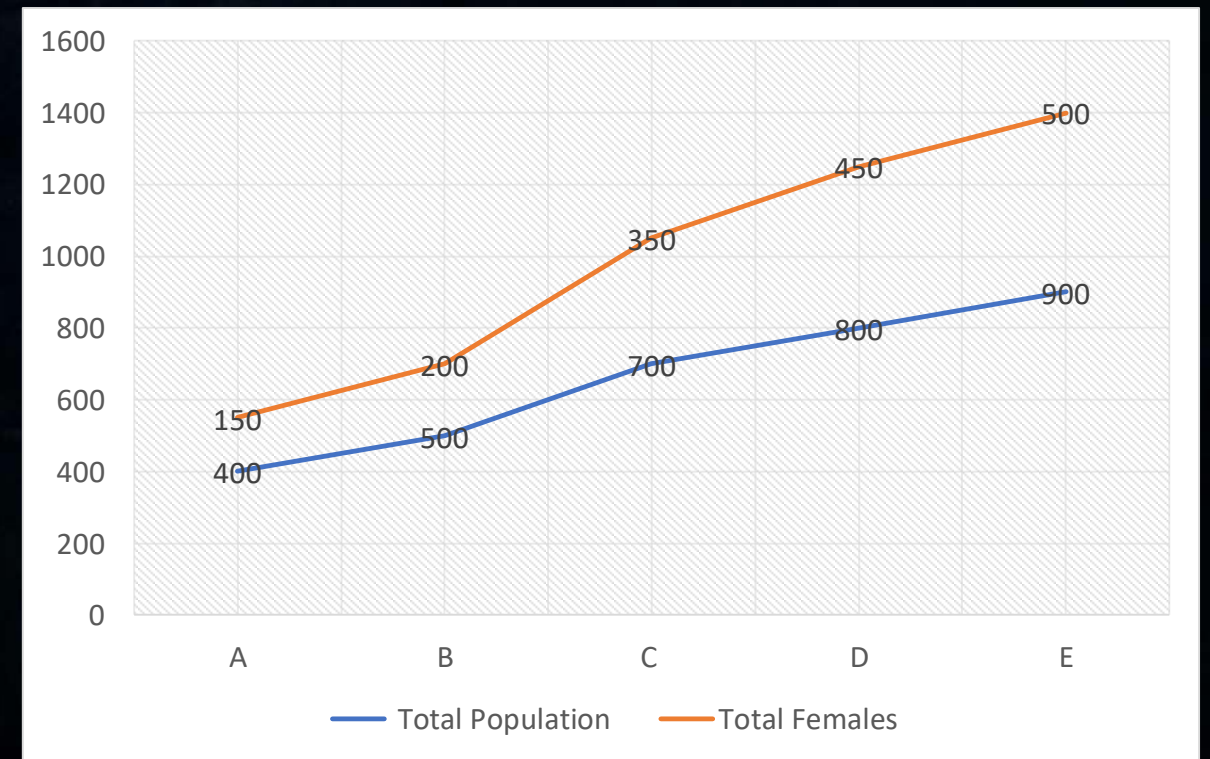
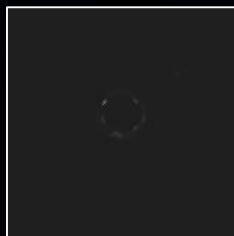


40 Female population of Park B is how much % of Male population of Park A.

पार्क B की महिला जनसंख्या पार्क A की पुरुष जनसंख्या का कितना % है?

PARKS	TOTAL POPULATION	FEMALES	MALES
A	400	150	250
B	500	200	300
C	700	350	350
D	800	450	350
E	900	500	400

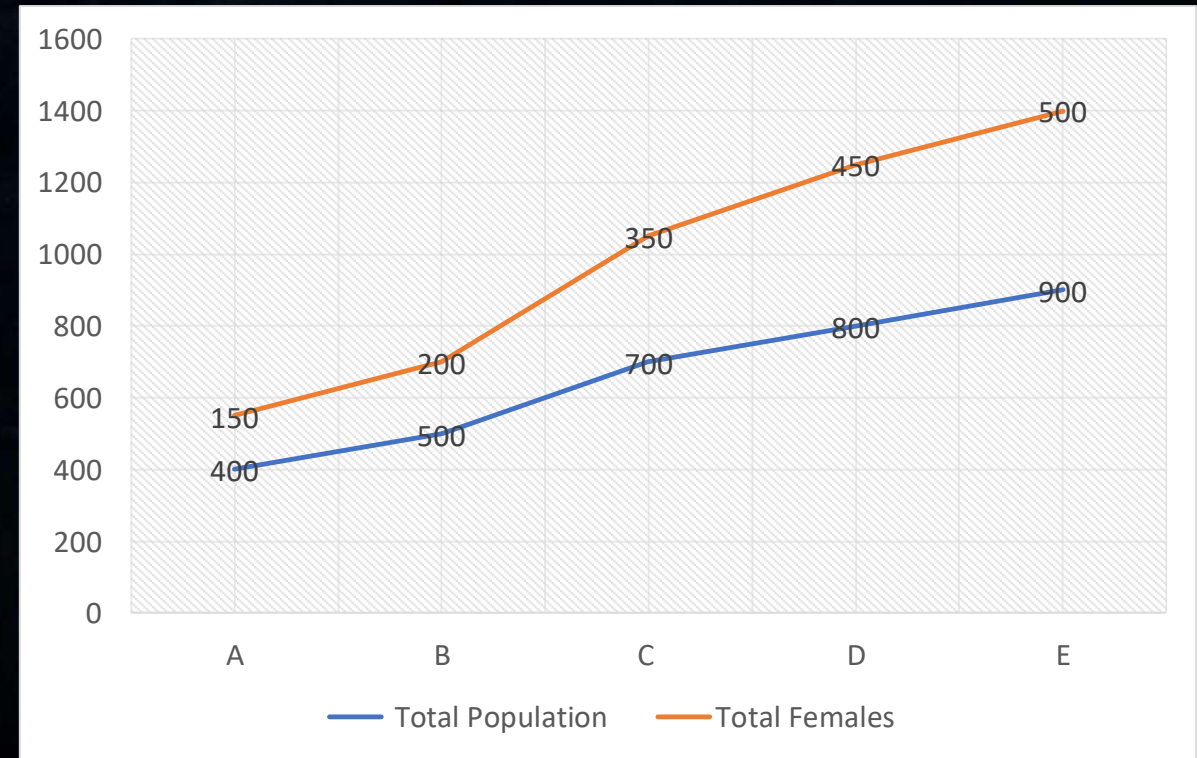
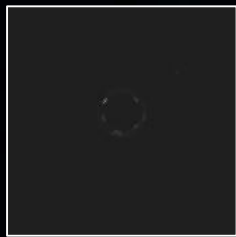
- (a) 60%
- (b) 40%
- (c) 75%
- (d) 80%
- (e) *none of these*



41 In Park C, total population of Male is how much more or less than the total population of Park D. पार्क C में, पुरुषों की कुल जनसंख्या पार्क D की कुल जनसंख्या से कितनी अधिक या कम है?

PARKS	TOTAL POPULATION	FEMALES	MALES
A	400	150	250
B	500	200	300
C	700	350	350
D	800	450	350
E	900	500	400

- (a) 600  
(b) 400  
(c) 350  
(d) 450  
(e) *none of these*



42 If the ratio of Employed and Unemployed Females in Park E is 3 : 2, then find the total of male population of Park E and unemployed population of females in Park E.

यदि पार्क E में नियोजित और बेरोजगार महिलाओं का अनुपात 3: 2 है, तो पार्क E में पुरुष जनसंख्या और पार्क E में महिलाओं की बेरोजगार जनसंख्या का कुल योग ज्ञात कीजिए।

(a) 600

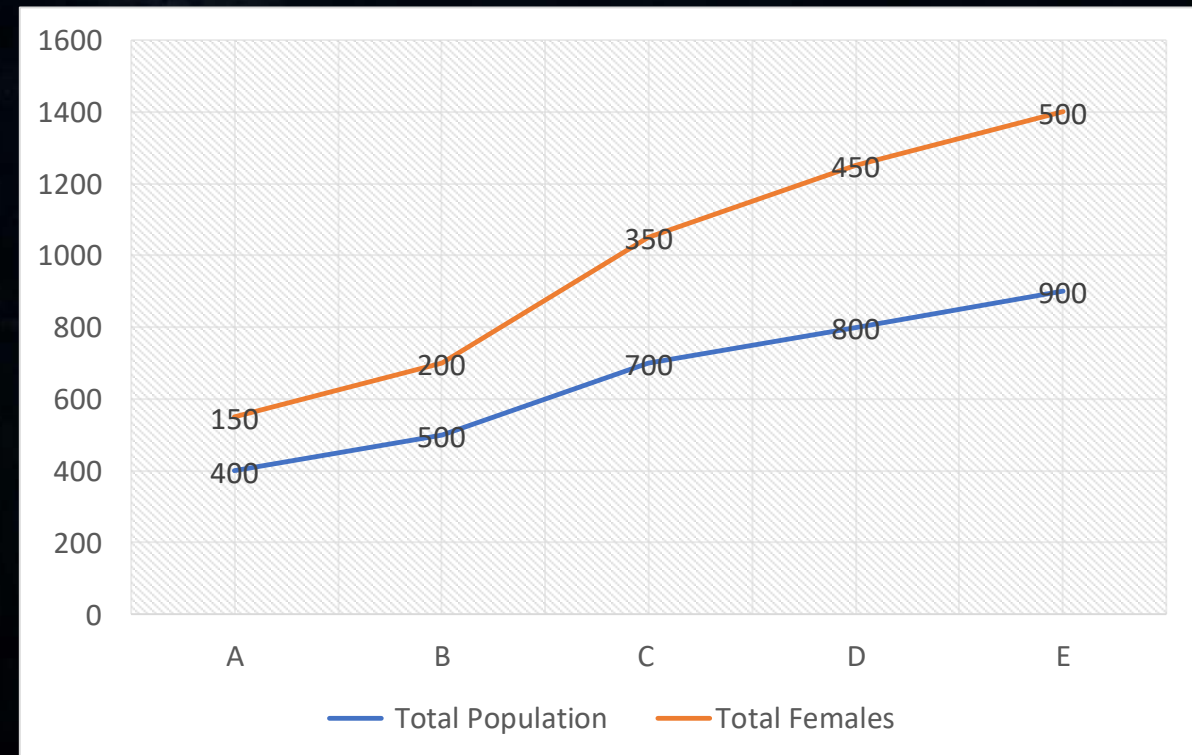
(b) 400

(c) 750

(d) 800

(e)  
*none of these*

PARKS	TOTAL POPULATION	FEMALES	MALES
A	400	150	250
B	500	200	300
C	700	350	350
D	800	450	350
E	900	500	400

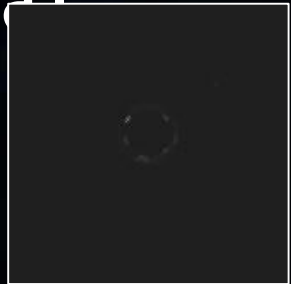




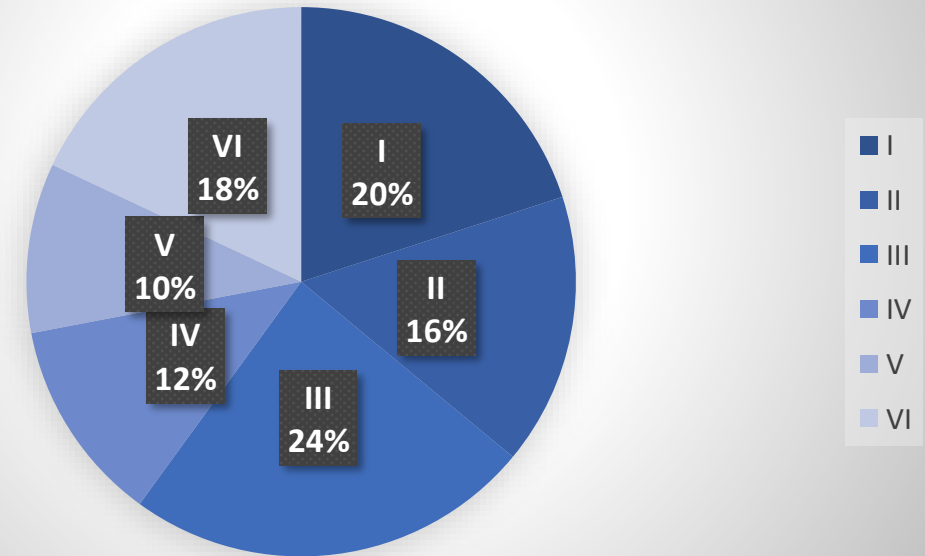
## PAPER HACKED (MOST EXPECTED QUESTIONS FOR SBI CLERK)

Pie chart shows the percentage distribution of total students appeared in six different shifts of an exam. Study the pie chart given below and answer the following questions.

पाई चार्ट एक परीक्षा की छह अलग-अलग पालियों में उपस्थित कुल छात्रों का प्रतिशत वितरण दर्शाता है। नीचे दिए गए पाई चार्ट का अध्ययन करें और निम्नलिखित प्रश्नों के उत्तर दें।



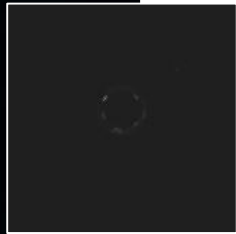
Total students appeared in exam -  
5500



43

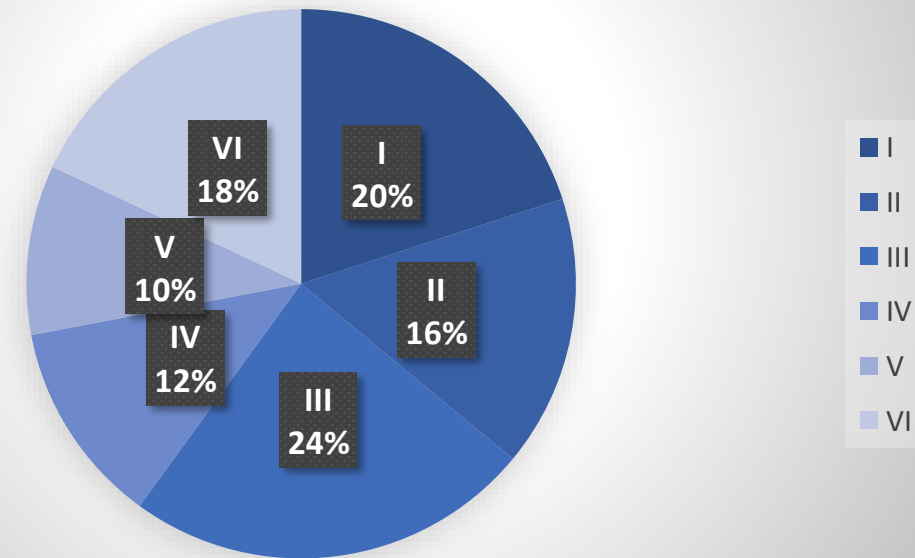
Find the ratio of total students who appear in exam in shift I to shift V

शिफ्ट I और शिफ्ट V में परीक्षा देने वाले कुल छात्रों का अनुपात ज्ञात कीजिए



- (a) 5 : 3  
(b) 4 : 3  
(c) 7 : 2  
(d) 8 : 9  
(e) *none of these*

Total students appeared in exam -  
5500



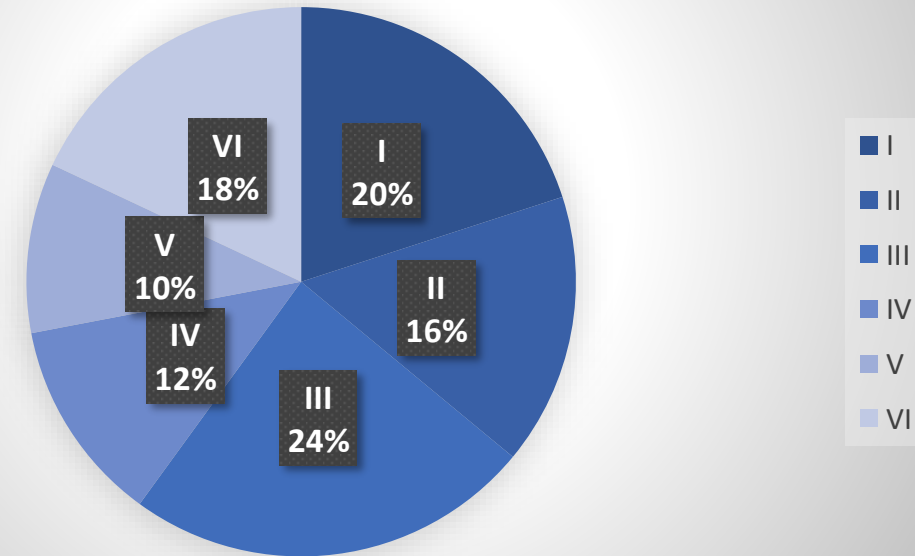
44

Find average of students appeared in exam shifts I, II, and III  
परीक्षा पाली I, II और III में उपस्थित छात्रों का औसत ज्ञात कीजिए



- (a) 500
- (b) 1200
- (c) 700
- (d) 1100
- (e) *none of these*

Total students appeared in exam -  
5500



45

नीचे दिया गया डेटा कक्षा ए, बी और सी में कुल छात्रों की जानकारी दिखाता है जिन्हें तीन समूहों एक्स, वाई और जेड में विभाजित किया गया है।

कक्षा ए: छात्रों की कुल संख्या 90 है। समूह X में 30 छात्र हैं। समूह Y और Z में छात्रों की संख्या का अनुपात 1: 2 है।

कक्षा बी: छात्रों की कुल संख्या 80 है समूह X, Y और Z में छात्रों की संख्या का अनुपात 8: 5: 3 है।

कक्षा सी: समूह Y में छात्रों की संख्या समूह X की तुलना में आधी है। कक्षा C के समूह X में छात्रों की संख्या कक्षा A के समूह X में छात्रों की संख्या से 20 अधिक है।

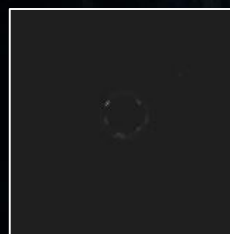
	X	Y	Z
A			
B			
C			

The data given below shows the information of total students in class A, B and C which are divided in three groups X, Y and Z.

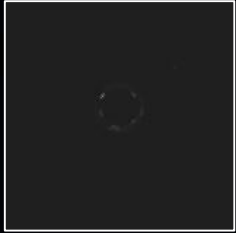
**Class A:** Total no. of students are 90. 30 students are in group X. ratio of number of students in group Y and Z is 1: 2.

**Class B:** Total no. of students are 80. The ratio of no. of students in group X, Y and Z is 8: 5: 3.

**Class C:** the no. of students in group Y are half of that in group X. The no of students in group X of class C are 20 more than that in group X of class A. no. of students in group Z of class C are 20% less than that in group X of same class.



45



The data given below shows the information of total students in class A, B and C which are divided in three groups X, Y and Z.

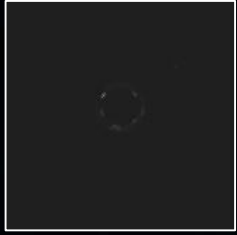
**Class A:** Total no. of students are 90. 30 students are in group X. ratio of number of students in group Y and Z is 1: 2.

**Class B:** Total no. of students are 80. The ratio of no. of students in group X, Y and Z is 8: 5: 3.

**Class C:** the no. of students in group Y are half of that in group X. The no of students in group X of class C are 20 more than that in group X of class A. no. of students in group Z of class C are 20% less than that in group X of same class.

	X	Y	Z
A			
B			
C			

46

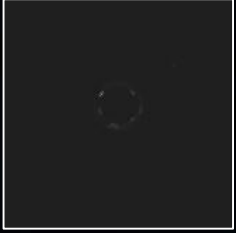


A vessel contains 30 liters of milk and 6 liters of water, X liter of water is added in it. In final mixture water is 30% of the milk. Find the value of 'X'?

एक बर्तन में 30 लीटर दूध और 6 लीटर पानी है, इसमें X लीटर पानी मिलाया गया है। अंतिम मिश्रण में पानी दूध का 30% है। एक्स का मान ज्ञात करें?

- (a) 3 liters
- (b) 6 liters
- (c) 9 liters
- (d) 12 liters
- (e) 10 liters

47

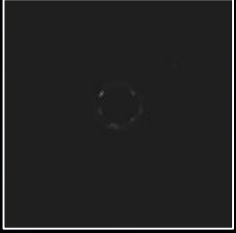


An article is marked up by Rs.  $X$  and the cost price of the article is Rs 28000. If discount of Rs  $\frac{X}{2}$  is given and he gets a profit of 12.5%, then find  $X/2$

एक वस्तु पर  $x$  रुपये अंकित है और वस्तु का लागत मूल्य 28000 रुपये है यदि  $x/2$  रुपये की छूट दी जाती है और उसे 12.5% का लाभ मिलता है, तो  $x/2$  ज्ञात करें

- (a) 1750
- (b) 3500
- (c) 3600
- (d) 1800
- (e) 2500

48

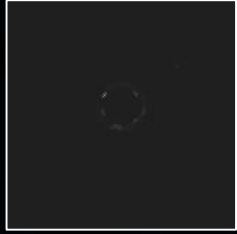


Ratio of length to breadth of a rectangle is 4:3. If the area of that rectangle is  $108 \text{ cm}^2$  and breadth of this rectangle is equal to the side of a square then find the area of that square.

एक आयत की लंबाई और चौड़ाई का अनुपात 4:3 है। यदि उस आयत का क्षेत्रफल  $108 \text{ सेमी}^2$  है और इस आयत की चौड़ाई एक वर्ग की भुजा के बराबर है तो उस वर्ग का क्षेत्रफल ज्ञात कीजिए।

- (a)  $49 \text{ cm}^2$
- (b)  $100 \text{ cm}^2$
- (c)  $64 \text{ cm}^2$
- (d)  $81 \text{ cm}^2$
- (e)  $121 \text{ cm}^2$

49

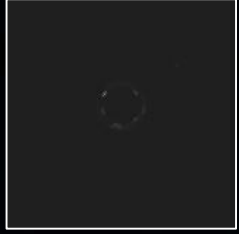


40% of 'x' is equal to 30% of 'y'. If average of x & y is 30 more than x, then find 75% of the 'y'?

'x' का 40% 'y' के 30% के बराबर है यदि x और y का औसत x से 30 अधिक है, तो 'y' का 75% ज्ञात कीजिए?

- (a) 180
- (b) 150
- (c) 240
- (d) 210
- (e) 360

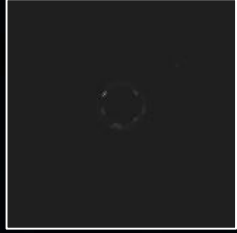
50



Average weight of a group is 36 kg. If a student having weight of 48 kg left the group, then the average weight of a group is decreased by one kg., then find the number of people in the group initially?  
एक समूह का औसत वजन 36 किलोग्राम है यदि 48 किलोग्राम वजन वाला एक छात्र समूह छोड़ देता है, तो समूह का औसत वजन एक किलोग्राम कम हो जाता है, तो प्रारंभ में समूह में लोगों की संख्या ज्ञात करें?

- (a) 10
- (b) 13
- (c) 15
- (d) 16
- (e) 20

51



A work can be completed by A alone in 75 days. A started the work and left after 36 days after which B completed the remaining work in 26 days. In how many days can B alone finish the work?

एक काम को अकेले A द्वारा 75 दिनों में पूरा किया जा सकता है A ने काम शुरू किया और 36 दिनों के बाद छोड़ दिया जिसके बाद B ने शेष कार्य को 26 दिनों में पूरा किया। B अकेले कितने दिनों में काम पूरा कर सकता है?

(a) None of these

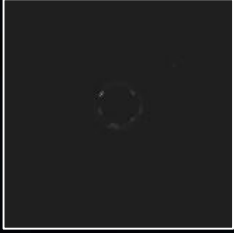
(b) 50

(c) 48

(d) 46

(e) 52

52

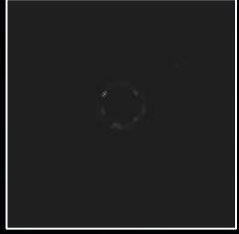


A man received Rs.3456 when he invested Rs.P at 12% p.a. at SI for 3 years. If he invested Rs.(P + 4400) at 15% p.a. at CI compounding annually for 2 years, then find the interest received by him.

एक आदमी को 3456 रुपये प्राप्त हुए जब उसने 3 साल के लिए एसआई पर 12% प्रति वर्ष की दर से पी रुपये का निवेश किया। यदि उसने 2 साल के लिए सालाना चक्रवृद्धि चक्रवृद्धि ब्याज पर 15% प्रति वर्ष की दर से सीआई पर (पी + 4400) रुपये का निवेश किया, तो उसके द्वारा प्राप्त ब्याज ज्ञात कीजिए।

- (a) Rs.4515
- (b) Rs.4960
- (c) Rs.4725
- (d) Rs.4185
- (e) Rs.4345

53

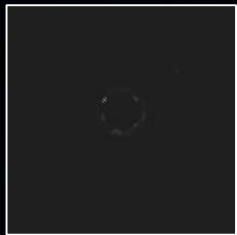


Average age of A, B and C is 30 years and the sum of age of A and B is 70 years. If the ratio of age of C and A is 1: 2, then find the difference in the age of C and A.

A, B और C की औसत आयु 30 वर्ष है और A और B की आयु का योग 70 वर्ष है। यदि C और A की आयु का अनुपात 1:2 है, तो C और A की आयु में अंतर ज्ञात कीजिये

- (a) 28 years
- (b) 20 years
- (c) 14 years
- (d) 8 years
- (e) 10 years

54

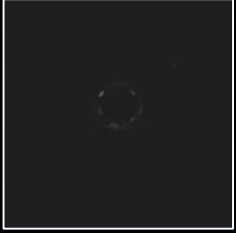


A invests Rs.  $X$  in a business. After four months B joined him with Rs.  $2X$  and A double his investment. If at the end of the years total profit is Rs. 13950, then find the profit share of A?

A एक व्यवसाय में  $X$  रुपये का निवेश करता है, चार महीने बाद B  $2X$  रुपये के साथ उसके साथ जुड़ जाता है और A अपने निवेश को दोगुना कर देता है। यदि वर्षों के अंत में कुल लाभ 13950 रुपये है, तो A का लाभ हिस्सा ज्ञात करें?

- (a) 7250 Rs.
- (b) 7750 Rs.
- (c) 8750 Rs.
- (d) 6750 Rs.
- (e) 7050 Rs.

55



Train A running at a speed of 36 km/hr crosses train B in 20 seconds. Find the speed of train B (in km/hr), if the sum of the length of train A & train B is 600 meters and both trains running in the opposite direction.

ट्रेन A 36 किमी/घंटा की गति से चलती हुई ट्रेन B को 20 सेकंड में पार करती है। यदि ट्रेन A और ट्रेन B की लंबाई का योग 600 मीटर है और दोनों ट्रेनें विपरीत दिशा में चल रही हैं, तो ट्रेन B की गति (किमी/घंटा में) ज्ञात करें।

- (a) 72 km/hr
- (b) 54 km/hr
- (c) 48 km/hr
- (d) 108 km/hr
- (e) 81 km/hr



# REASONING



# PAPER HACKED (MOST EXPECTED QUESTIONS FOR SBI CLERK)

Q. 36

9 K L 3 \$ G @ 2 9 &amp; # K M ^ 9 1 G A \$ B ! M 6 3 % G K 2 &amp; Z

Which among the following element is 5th to the left of the element which is 8th from the right end in the above series?

निम्नलिखित में से कौन सा तत्व उपरोक्त श्रृंखला में दाएं छोर से 8वें तत्व के बाएं से 5वां है?

- (a) B
- (b) A
- (c) @
- (d) %
- (e) 3

Q.37

9KL3\$G@29&amp;#KM^91GA\$B!M63%GK2&amp;Z

How many letters are immediately followed by a symbol and immediately preceded by a letter?

कितने अक्षरों के ठीक बाद एक प्रतीक और ठीक पहले एक अक्षर आता है?

- (a) Three
- (b) One
- (c) Two
- (d) None
- (e) More than three

Q.38

9 K L 3 \$ G @ 2 9 &amp; # K M ^ 9 1 G A \$ B ! M 6 3 % G K 2 &amp; Z

If all the odd numbers are dropped from the above series than which among the following element is 7<sup>th</sup> to the right of 4<sup>th</sup> element from the left end?

यदि उपरोक्त श्रृंखला से सभी विषम संख्याओं को हटा दिया जाए तो निम्नलिखित में से कौन सा तत्व बाएं छोर से चौथे तत्व के दाईं ओर 7वां होगा?

(a) M

(b) 6

(c) K

(d) ^

(e) #

Q.39

9 K L 3 \$ G @ 2 9 &amp; # K M ^ 9 1 G A \$ B ! M 6 3 % G K 2 &amp; Z

What is the sum of the numbers which are immediately followed by symbols?

उन संख्याओं का योग क्या है जिनके ठीक बाद प्रतीक आते हैं?

(a) 18

(b) 17

(c) 19

(d) 21

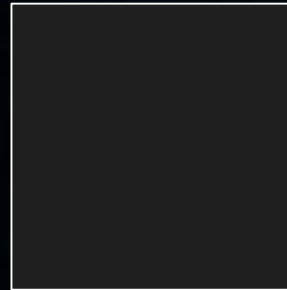
(e) 23

Q.40

9 K L 3 \$ G @ 2 9 &amp; # K M ^ 9 1 G A \$ B ! M 6 3 % G K 2 &amp; Z

How many consonants are between the element which is 10<sup>th</sup> from right end and the element which is 7<sup>th</sup> from left end?  
दाएँ छोर से 10वें तत्व और बाएँ छोर से 7वें तत्व के बीच कितने व्यंजन हैं?

- (a) Five
- (b) Three
- (c) Two
- (d) Four
- (e) None of these



Q.41

**Statements:**

Some class are book.

All book is bag. Only bag is pen.

**Conclusions:**

I. Some book are not pen

II. All book are pen

**कथन:** कुछ क्लास बुक हैं।

सभी बुक बैग हैं।

केवल बैग पेन है।

**निष्कर्ष:**

I. कुछ बुक पेन नहीं हैं

II. सभी बुक पेन हैं

(a) Only conclusion II follows

(b) Either conclusion I or II follows

(c) Neither conclusion I nor II follows

(d) Only conclusion I follows

(e) Both conclusion I and II follows

Q.42

**Statements:**

Only a few runner are swimmer.

Some swimmer are not tracker.

Only a few hiker are tracker.

**Conclusions:**

I. Some runner are not tracker.

II. All hiker being tracker is a possibility

**कथन:** केवल कुछ धावक तैराक हैं।

कुछ तैराक ट्रैकर नहीं हैं।

केवल कुछ हाइकर ट्रैकर हैं।

**निष्कर्ष:**

I. कुछ धावक ट्रैकर नहीं हैं

II. सभी हाइकर के ट्रैकर होने की संभावना है

(a) Only conclusion II follows

(b) Either conclusion I or II follows

(c) Neither conclusion I nor II follows

(d) Only conclusion I follows

(e) Both conclusion I and II follows

Q.43

**Statements:**

All leaves are flowers

Only a few flowers are branches

Some branches are trees

**Conclusions:**

I. All flowers are trees

II. No flower is tree

**कथन:** सभी पत्तियां फूल हैं।

केवल कुछ फूल शाखाएँ हैं। कुछ शाखाएँ पेड़ हैं।

**निष्कर्ष:**

I. सभी फूल पेड़ हैं।

II. कोई फूल पेड़ नहीं है।

(a) Only conclusion II follows

(b) Either conclusion I or II follows

(c) Neither conclusion I nor II follows

(d) Only conclusion I follows

(e) Both conclusion I and II follows

Q.44

If we form a four-letter meaningful word with 3rd, 5th, 8th and 9th letter (using each letter only once) of the word 'CONCENTRATE', then what will be the first letter of the meaningful word? If more than one meaningful word is formed, mark the answer as P and if no meaningful word is formed, mark the answer as S.

यदि हम 'CONCENTRATE' शब्द के तीसरे, पांचवें, आठवें और नौवें अक्षर (प्रत्येक अक्षर का केवल एक बार उपयोग करके) से चार अक्षर का एक सार्थक शब्द बनाते हैं, तो सार्थक शब्द का पहला अक्षर क्या होगा? यदि एक से अधिक सार्थक शब्द बनते हैं, तो उत्तर को P के रूप में चिह्नित कीजिए और यदि कोई सार्थक शब्द नहीं बनता है, तो उत्तर को S के रूप में अंकित कीजिए।

(a) E

(b) N

(c) S

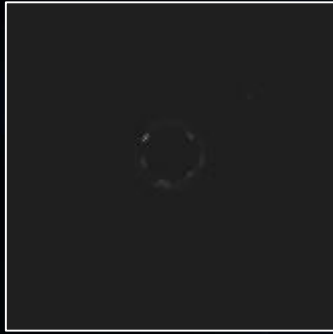
(d) R

(e) P

Q.45

**Statement:** $A > Q \leq P \geq R > J \leq T > C$ **Conclusions:**I.  $P > C$ II.  $A > T$ 

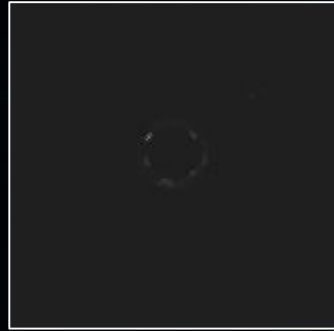
- (a) Both conclusion I and II are true
- (b) Only conclusion II is true
- (c) Only conclusion I is true
- (d) None is true
- (e) Either conclusion I or II are true



Q.46

**Statements:** $Z > B \geq S < V \geq F; T > F > E$ **Conclusions:**I.  $Z \geq F$ II.  $E < B$ 

- (a) Both conclusion I and II are true
- (b) Only conclusion II is true
- (c) Only conclusion I is true
- (d) None is true
- (e) Either conclusion I or II are true



Q.47

**Statements:** $M < N = Q > D > R < X; Q = S > P > L > K < G$ **Conclusions:**I.  $M < G$ II.  $N > K$ 

- (a) Both conclusion I and II are true
- (b) Only conclusion II is true
- (c) Only conclusion I is true
- (d) None is true
- (e) Either conclusion I or II are true

Q.48

In the number '392576539, if 1 is added to even digits and 2 is subtracted from odd digits. Then, what will be the product of the highest and 2<sup>nd</sup> smallest digit in the new number?

संख्या '392576539' में, यदि सम अंकों में 1 जोड़ा जाए तथा विषम अंकों में से 2 घटाया जाए, तो नई संख्या में सबसे बड़े तथा दूसरे सबसे छोटे अंक का गुणनफल क्या होगा?

- (a) 27
- (b) 24
- (c) 21
- (d) 16
- (e) None of these

Q.49-51

A family of three generation consists of eight members and two married couples who have child. G is daughter-in-law of A who has three children. C is sister-in-law of G who has no siblings. H is aunt of C who is child of D. A is sister-in-law of H. I is nephew of J and is unmarried. Gender of F and J is different.

तीन पीढ़ियों के एक परिवार में आठ सदस्य और दो विवाहित जोड़े हैं जिनके बच्चे हैं। G, A की बहू है जिसके तीन बच्चे हैं। C, G की सिस्टर इन लॉ है जिसका कोई भाई-बहन नहीं है। H, C की आंट है, जो D की संतान है। A, H की सिस्टर इन लॉ है। I, J का नेप्पू है और अविवाहित है। F और J का लिंग अलग है।

Q.49 Who among the following is the grandmother of I?

निम्नलिखित में से कौन I की दादी है?

- (a) H (b) A  
(c) G (d) C  
(e) None of these

A family of three generation consists of eight members and two married couples who have child. G is daughter-in-law of A who has three children. C is sister-in-law of G who has no siblings. H is aunt of C who is child of D. A is sister-in-law of H. I is nephew of J and is unmarried. Gender of F and J is different.

Q.49 Who among the following is the grandmother of I?

निम्नलिखित में से कौन I की दादी है?

- (a) H (b) A  
(c) G (d) C  
(e) None of these

Q.50

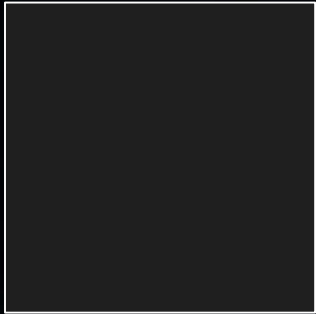
**How J is related to G?**

- (a) Brother
- (b) Father
- (c) Sister-in-law
- (d) Sister
- (e) Niece

Q.51

**If the age of J is 35 years, then what will be the possible age of D?**

- (a) 23 years
- (b) 34 years
- (c) 55 years
- (d) 28 years
- (e) 19 years



Q.52

How many pairs of letters are there in the word "COMBINE" which have as many letters between them as in alphabetical series from the both forward and backward direction?

शब्द "COMBINE" में अक्षरों के ऐसे कितने जोड़े हैं जिनके बीच उतने ही अक्षर हैं जितने वर्णमाला श्रृंखला में आगे और पीछे दोनों दिशाओं से उनके बीच होते हैं?

- (a) None
- (b) One
- (c) Two
- (d) Three
- (e) None of these

Q. 53-55

कुछ व्यक्ति एक पंक्ति में बैठे हैं और सभी का मुख उत्तर दिशा की ओर है। L और R के बीच केवल छह व्यक्ति बैठे हैं। I, R के दाएं से चौथे स्थान पर बैठा है। I और P के बीच केवल दो व्यक्ति बैठे हैं जो किसी एक अंतिम छोर से दूसरे स्थान पर बैठा है। R और I के बीच उतने ही व्यक्ति बैठे हैं जितने I और U के बीच बैठे हैं। U और F के बीच केवल आठ व्यक्ति बैठे हैं। A किसी एक अंतिम छोर पर बैठा है और F के ठीक दाएं बैठा है। Q, A से पांच स्थान की दूरी पर बैठा है।

A  
L  
L  
T  
H  
E  
B  
E  
S  
T

Certain number of persons are sitting in a row and all are facing towards the north direction.

Only six persons sit between L and R. I sits fourth to the right of R. Only two persons sit between I and P who sits second from one of the extreme ends. As many persons sit between R and I as between I and U. Only eight persons sit between U and F. A sits at one of the extreme ends and sits immediate right of F. Q sits five places away from A.



## PAPER HACKED (MOST EXPECTED QUESTIONS FOR SBI CLERK)

**Certain number of persons are sitting in a row and all are facing towards the north direction.** Only six persons sit between L and R. I sits fourth to the right of R. Only two persons sit between I and P who sits second from one of the extreme ends. As many persons sit between R and I as between I and U. Only eight persons sit between U and F. A sits at one of the extreme ends and sits immediate right of F. Q sits five places away from A.



# PAPER HACKED (MOST EXPECTED QUESTIONS FOR SBI CLERK)

Q.53

**How many person sits in a row?**

- a. 19
- b. 17
- c. 18
- d. 16
- e. None of the above

Q.54

**Who sits 4<sup>th</sup> to the left of A?**

- a. R
- b. Q
- c. L
- d. Unknown person
- e. None of the above

Q.55

**How many persons sit between R and Q?**

- a. 10
- b. 11
- c. 12
- d. 13
- e. None of the above

Q. 56-60

आठ व्यक्ति - F, G, H, I, J, K, L, और M - एक चार मंजिला इमारत में इस प्रकार रहते हैं कि भूतल की संख्या 1 है, मंजिल 1 के ठीक ऊपर वाली मंजिल की संख्या 2 है और अन्य भी इसी प्रकार हैं। प्रत्येक मंजिल में फ्लैट A और फ्लैट B के रूप में दो फ्लैट हैं। फ्लैट B, फ्लैट A के पूर्व में है। M एक सम संख्या वाली मंजिल पर रहता है। M उस मंजिल के ठीक ऊपर रहता है जिस पर G रहता है, जो उस मंजिल के पश्चिम में रहता है जिस पर J रहता है। और L एक ही मंजिल पर रहते हैं लेकिन उनमें से कोई भी उस मंजिल के निकटस्थ नहीं रहता है जिस पर J रहता है। L और F जिस मंजिल पर रहते हैं उनके मध्य केवल एक मंजिल है। F और J अलग-अलग फ्लैट में रहते हैं। और K उसी फ्लैट में रहते हैं जिसमें M रहता है।

Eight persons – F, G, H, I, J, K, L, and M – are living in a four-storey building such that ground floor is numbered as 1, the floor immediately above floor 1 is numbered as 2 and so on. Each of the floors has two flats in it as flat A and flat B. Flat B is to the east of flat A.

M lives on an even numbered floor.

M lives immediately above the floor on which G lives, who lives to the west of the floor on which J lives. I and L live on the same floor but neither of them lives adjacent to the floor on which J lives. There is only one floor between the floor on which L and F lives. F and J lives in different flats. I and K live in same flat in which M lives.

A  
L  
L  
T  
H  
E  
B  
E  
S  
T



## PAPER HACKED (MOST EXPECTED QUESTIONS FOR SBI CLERK)

Eight persons – F, G, H, I, J, K, L, and M – are living in a four-storey building such that ground floor is numbered as 1, the floor immediately above floor 1 is numbered as 2 and so on. Each of the floors has two flats in it as flat A and flat B. Flat B is to the east of flat A.

M lives on an even numbered floor. M lives immediately above the floor on which G lives, who lives to the west of the floor on which J lives. I and L live on the same floor but neither of them lives adjacent to the floor on which J lives. There is only one floor between the floor on which L and F lives. F and J lives in different flats. I and K live in same flat in which M lives.

**Q.56 Which of the following pair live in the same flat?**

- a. I, H
- b. J, F
- c. F, M
- d. H, G
- e. L, J

**Q.58 Who among the following lives two floors below the floor on which K lives?**

- a. K
- b. G
- c. M
- d. L
- e. None of these

**Q.57 On which floor and in which flat does H lives?**

- a. Floor 3, Flat B
- b. Floor 2, Flat B
- c. Floor 3, Flat A
- d. Floor 4, Flat A
- e. Floor 4, Flat B

**Q.59 Four of the following are alike in a certain way and hence form a group. Find the one which does not belong to that group.**

- a. H
- b. F
- c. M
- d. K
- e. G

**Q.60 Who lives on floor 3<sup>rd</sup> ?**

- a. H M
- b. F M
- c. G I
- d. H K
- e. L K

Q.61-65

A से H तक आठ व्यक्ति एक ही वर्ष में अलग-अलग महीनों यानी जून, जुलाई, अगस्त और सितंबर में अलग-अलग कार्यालयों में शामिल हुए हैं। वे महीने की 9 या 15 तारीख को शामिल हुए हैं। दी गई तारीख को केवल एक व्यक्ति कार्यालय में शामिल हुआ है। अधिकतम तीन और कम से कम एक व्यक्ति C के बाद शामिल हुआ। A 9 जुलाई को शामिल हुआ। H और D के बीच तीन व्यक्ति शामिल हुए। B, H से ठीक पहले शामिल हुआ लेकिन दोनों अलग-अलग महीनों में शामिल हुए। E, G के बाद शामिल होने वाला दूसरा व्यक्ति है।

A  
L  
L  
T  
H  
E  
B  
E  
S  
T

Eight persons from A to H have joined different offices in different months i.e., June, July, August and September in the same year. They have joined on either 9th or 15th of the month. Only one person has joined the office on the given date. At most three and at least one person joined after C. A joined on 9<sup>th</sup> July. Three persons joined between H and D. B joined just before H but both joined in different months. E is the 2<sup>nd</sup> person to join after G.

Eight persons from A to H have joined different offices in different months i.e., June, July, August and September in the same year. They have joined on either 9th or 15th of the month. Only one person has joined the office on the given date.

At most three and at least one person joined after C. A joined on 9 th July. Three persons joined between H and D. B joined just before H but both joined in different months. E is the 2 nd person to join after G.

**Q.61** Who among the following person joined on 15<sup>th</sup> June?

- (a) H
- (b) B
- (c) E
- (d) D
- (e) F

**Q.62** Who joined just after C?

- (a) F
- (b) E
- (c) B
- (d) D
- (e) None of these

**Q.63** If all the persons are arranged in alphabetical order from June to September, then the position of how many persons will remain same?

- (a) None
- (b) One
- (c) Three
- (d) Two
- (e) Four

**Q.64** Number of persons joined between D and G is same as the number of persons joined between \_\_\_ and \_\_\_.

- (a) F, E
- (b) B, C
- (c) A, C
- (d) F, C
- (e) B, E

**Q.65** How many person are joined between D and box G?

- (a) 3
- (b) 1
- (c) 4
- (d) 5
- (e) 4

Q. 66-70

आठ बॉक्स L, M, N, O, P, Q, R और S एक के ऊपर एक रखे गए हैं, लेकिन जरूरी नहीं कि इसी क्रम में हों।

बॉक्स S, बॉक्स P के ऊपर नहीं रखा गया है। बॉक्स Q, बॉक्स M के ठीक ऊपर रखा गया है। N और L के बीच तीन बॉक्स हैं, जो बॉक्स N के ऊपर रखा गया है। M और N के बीच कोई बॉक्स नहीं है। M और P के बीच दो बॉक्स हैं। बॉक्स O, बॉक्स Q के ऊपर रखा गया है।

A

L

L

T

H

E

B

E

S

T

Eight boxes L, M, N, O, P, Q, R and S are placed one above the another but not necessarily in the same order. Box S does not place above the box P. Box Q is placed just above the box M. Three boxes gap between N and L which is placed above of box N. No box in between M and N. There are two boxes gap between M and P. Box O is placed above to the box Q.



## PAPER HACKED (MOST EXPECTED QUESTIONS FOR SBI CLERK)

**Eight boxes L, M, N, O, P, Q, R and S are placed one above the another but not necessarily in the same order.**

**Box S does not place above the box P. Box Q is placed just above the box M. Three boxes gap**

**between N and L which is placed above of box N. No box in between M and N. There are two boxes gap between M and P. Box O is placed above to the box Q.**

**Q.66** How many boxes are placed between box O and box N?

- (a) 3
- (b) 1
- (c) 2
- (d) 5
- (e) 4

**Q.67** Which of the following box is placed just below the box N?

- (a) P
- (b) S
- (c) R
- (d) M
- (e) None of these

**Q.68** Which of the following box is placed at the top most position?

- (a) L
- (b) O
- (c) P
- (d) R
- (e) None of these

**Q.69** Four of the following five pairs are alike in a certain way and hence they form a group. Which one of the following does not belong to that group?

- (a) L and Q
- (b) O and M
- (c) N and P
- (d) Q and R
- (e) R and S

**Q.70** How many boxes are placed between box P and box Q?

- (a) None
- (b) One
- (c) Three
- (d) Four
- (e) Five

SCORE PLEASE



Q.1

**Statements:**

Only a few Tamilnadu is Kerala. All Kerala is Karnataka.  
Only a few Bihar is Karnataka.

**Conclusions:**

- I. All Karnataka being Bihar is a possibility
- II. All Bihar can never be Kerala.

**कथन:**

केवल कुछ तमिलनाडु केरल हैं। सभी केरल कर्नाटक हैं।  
केवल कुछ बिहार कर्नाटक हैं।

**निष्कर्ष:**

- I. सभी कर्नाटक के बिहार होने की संभावना है
- II. सभी बिहार कभी केरल नहीं हो सकते।

- (a) Only conclusion II follows
- (b) Either conclusion I or II follows
- (c) Neither conclusion I nor II follows
- (d) Only conclusion I follows
- (e) Both conclusion I and II follows

Q.2

**Statements:**

Only a few Laptops are Tablet. No Tablet is a PC.  
All PCs are Mouse.

**Conclusions**

- I. All PCs can be Laptop
- II. No Tablet is a Mouse

**कथन:**

केवल कुछ लैपटॉप टैबलेट हैं। कोई भी टैबलेट पीसी नहीं है। सभी पीसी माउस हैं।

**निष्कर्ष**

- I. सभी पीसी लैपटॉप हो सकते हैं
- II. कोई भी टैबलेट माउस नहीं है

- (a) Only conclusion II follows
- (b) Either conclusion I or II follows
- (c) Neither conclusion I nor II follows
- (d) Only conclusion I follows
- (e) Both conclusion I and II follows

Q.3

**Statements:**

Only a few Machines are Rubber. Only a few Plastics are Rubber. Only Plastic is Carbon.

**Conclusions**

- I. Some Machines are Plastic
- II. No Machine can be Plastic

**कथन:**

केवल कुछ मशीनें रबर हैं। केवल कुछ प्लास्टिक रबर हैं। केवल प्लास्टिक कार्बन है।

**निष्कर्ष**

- I. कुछ मशीनें प्लास्टिक हैं
- II. कोई भी मशीन प्लास्टिक नहीं हो सकती

- (a) Only conclusion II follows
- (b) Either conclusion I or II follows
- (c) Neither conclusion I nor II follows
- (d) Only conclusion I follows
- (e) Both conclusion I and II follows

Q. 4

ROF QUS SHI TNA ERS

If each vowel in each word is changed to its next letter and consonants are changed to the previous letter according to the alphabetical series, then how many words have at least one vowel?

यदि प्रत्येक शब्द में प्रत्येक स्वर को उसके अगले अक्षर से बदल दिया जाए और व्यंजनों को वर्णमाला क्रम के अनुसार पिछले अक्षर से बदल दिया जाए, तो कितने शब्दों में कम से कम एक स्वर होगा?

(a) None (b) 1

(c) 2 (d) 4

(e) 3

Q. 5

ROF QUS SHI TNA ERS

If all the letters are arranged in alphabetical order within the word from left to right, then how many words thus will get meaningful words?

यदि शब्द के सभी अक्षरों को बाएं से दाएं वर्णमाला क्रम में व्यवस्थित किया जाए, तो इस प्रकार कितने शब्दों में अर्थपूर्ण शब्द बनेंगे?

- (a) Three                      (b) One  
(c) Two   (d) Four  
(e) None

Q. 6

354 583 957 284 395

If all the digits are arranged in ascending order (within the number), then what is the sum of the third digit of the highest number and the first digit of the lowest number thus formed?

यदि सभी अंकों को आरोही क्रम में (संख्या के भीतर) व्यवस्थित किया जाए, तो इस प्रकार बनी सबसे बड़ी संख्या के तीसरे अंक और सबसे छोटी संख्या के पहले अंक का योग क्या होगा?

- (a) 11 (b) 12  
(c) 13 (d) 14  
(e) None of these

Q. 7

354 583 957 284 395

If all the digits are multiplied within the number, then which of the following number will yield the second highest resultant?

यदि संख्या के सभी अंकों को गुणा किया जाए, तो निम्नलिखित में से कौन सी संख्या दूसरा सबसे बड़ा परिणाम देगी?

- (a) 583                      (b) 354  
(c) 957                      (d) 284  
(e) 395

Q. 8

354 583 957 284 395

If 1 is added to all the prime digits and 1 is subtracted from the remaining digits, then which of the following digits is repeated the maximum number of times in the newly formed sequence?

यदि सभी अभाज्य अंकों में 1 जोड़ दिया जाए तथा शेष अंकों में से 1 घटा दिया जाए, तो नवगठित अनुक्रम में निम्नलिखित में से कौन सा अंक अधिकतम बार दोहराया जाएगा?

- (a) 3 (b) 4  
(c) 6 (d) 7  
(e) 8

Q. 9

In a certain code language,

"Dream phrase patience gift" is coded as "eri fgv qsd mjx"

"Smile emotion dream earn" is coded as "mvb ypj eri zaj"

"Gift box money smile" is coded as "mvb xhr qsd uri"

"Phrase box clever stick" is coded as "mjx sbi pmo xhr"

Which of the following phrase represents the code "uri fgv"?

- (a) Dream box
- (b) Gift money
- (c) Money patience
- (d) Box gift
- (e) Cannot be determined

Q. 10

In a certain code language,

"Dream phrase patience gift" is coded as "eri fgv qsd mjx"

"Smile emotion dream earn" is coded as "mvp ypj eri zaj"

"Gift box money smile" is coded as "mvp xhr qsd uri"

"Phrase box clever stick" is coded as "mjx sbi pmo xhr"

What is the code for the word "Box"?

- (a) pmo
- (b) ypj
- (c) qsd
- (d) eri
- (e) xhr

Q. 11

In a certain code language,

**"Dream phrase patience gift"** is coded as **"eri fgv qsd mjx"**

**"Smile emotion dream earn"** is coded as **"mvb ypj eri zaj"**

**"Gift box money smile"** is coded as **"mvb xhr qsd uri"**

**"Phrase box clever stick"** is coded as **"mjx sbi pmo xhr"**

If **"Emotion attack"** is coded as **"ypj abc"**, then what is the phrase for the code **"zaj abc mvb"** in the given code language?

- (a) Smile attack money
- (b) Earn attack smile
- (c) Box attack gift
- (d) Either a or b
- (e) Either c or b

Q. 12

In a certain code language,

"Dream phrase patience gift" is coded as "eri fgv qsd mjx"

"Smile emotion dream earn" is coded as "mvb ypj eri zaj"

"Gift box money smile" is coded as "mvb xhr qsd uri"

"Phrase box clever stick" is coded as "mjx sbi pmo xhr"

What may be the code for the word "Clever Dream"?

- (a) sbi mjx
- (b) uri fgv
- (c) qsd fgv
- (d) eri sbi
- (e) uri qsd

Q. 13

In a certain code language,

"Dream phrase patience gift" is coded as "eri fgv qsd mxj"

"Smile emotion dream earn" is coded as "mnb ypj eri zaj"

"Gift box money smile" is coded as "mnb xhr qsd uri"

"Phrase box clever stick" is coded as "mxj sbi pmo xhr"

What is the code for the phrase "Phrase gift" ?

- (a) fgv mnb
- (b) mxj qsd
- (c) ypj xhr
- (d) fgv eri
- (e) box fgv

Q. 14-15

A, B, C, D, P, Q, R, and S are eight-person. A faces towards the north and walk 4km to reach B then B turn right and walk 5km to reach C. C faces east direction turn right and walk 1km to reach D and D takes left turn and walks 5 km to reach P. P takes right turn and walk 4km to reach Q again takes right turns and walks 5km to reach R . R takes right turn and walk 3km to reach point S.

A, B, C, D, P, Q, R और S आठ व्यक्ति हैं। A का मुंह उत्तर की ओर है और वह 4 कि.मी. चलकर B तक पहुँच जाता है फिर B दायें मुड़ता है और 5 कि.मी. चलकर C तक पहुँच जाता है। C, जिसका मुंह पूर्व दिशा की ओर है, वह दायें मुड़ता है और 1 कि.मी. चलकर D तक पहुँच जाता है और D बायाँ मोड़ लेता है और 5 कि.मी. चलकर P तक पहुँच जाता है। P दायीं मोड़ लेता है और 4 कि.मी. चलकर Q तक पहुँच जाता है, Q पुनः दायीं मोड़ लेता है और 5 कि.मी. चलकर R तक पहुँच जाता है। R दायीं मोड़ लेता है और 3 कि.मी. चलकर बिंदु S तक पहुँच जाता है।

**Q.14** If a person M start walking same point where B starts and walk 2km in the same direction of B then find the distance between M and C?

यदि एक व्यक्ति M उसी बिंदु पर चलना शुरू करता है जहां से B चलना शुरू करता है और B की समान दिशा में 2 किमी चलता है तो M और C के बीच की दूरी ज्ञात कीजिए?

- a. 5km
- b. 3km
- c. 2km
- d. 7km
- e. 1km

**Q.15** In which direction is B with respect to P?

P के सन्दर्भ में B किस दिशा में है?

- a. South
- b. East
- c. North-West
- d. West
- e. South-West



Q. 18-  
22

आठ व्यक्ति, सुमित, अमित, सोना, मोना, गोविंद, गोपाल, मोहन और सोहन एक इमारत की आठ अलग-अलग मंजिलों पर रहते हैं, लेकिन जरूरी नहीं कि इसी क्रम में हों। इमारत की सबसे निचली मंजिल की संख्या एक है, उससे ऊपर की मंजिल की संख्या दो है, और इसी तरह सबसे ऊपरी मंजिल की संख्या आठ है। अमित जिस मंजिल पर रहता है उसके ऊपर की मंजिलों की संख्या मोना की मंजिल के नीचे की मंजिलों की संख्या के समान है। जिस मंजिल पर अमित रहता है और जिस मंजिल पर गोविंद या मोहन रहते हैं, उनके बीच एक मंजिल है। गोविंद, मोहन के ठीक ऊपर लेकिन अमित के नीचे रहता है। सुमित चौथी मंजिल पर रहता है। सुमित और सोहन जिस मंजिल पर रहते हैं, उनके बीच दो मंजिल है। साथ ही, सोहन और सोना जिन मंजिलों पर रहते हैं उनके बीच तीन मंजिल है।

Eight persons, Sumit, Amit, Sona, Mona, Govind, Gopal, Mohan, and Sohan live on eight different floors of a building but not necessarily in the same order. The lowermost floor of the building is numbered one, the one above that is numbered two, and so on till the topmost floor is numbered eight. The number of floors above the floor on which Amit lives is the same as the number of floors below the floor on which Mona lives. There is one floor between the floor on which Amit lives and either the floor on which Govind or Mohan lives. Govind lives just above Mohan but below Amit. Sumit lives on the fourth floor. There are two floors between the floors on which Sumit and Sohan live. Also, there are three floors between the floors on which Sohan and Sona live.

A  
L  
L  
T  
H  
E  
B  
E  
S  
T

**Q.18 Who amongst the following lives exactly between Sumit and Sona?**

- a. Only Gopal
- b. Only Govind
- c. Both Gopal and Govind
- d. Both Mohan and Gopal
- e. No one

**Q.20 As per the given arrangement, four of the following five are alike in a certain way and thus form a group. Which of the following does not belong to the group?**

- a. Mona - Sixth floor
- b. Mohan - Seventh floor
- c. Govind - Eighth floor
- d. Amit - Second Floor
- e. Sona - third floor

**Q.19 Sohan lives on which floor?**

- a. 1st
- b. 7th
- c. 3rd
- d. 6th
- e. Cannot be determined



## PAPER HACKED (MOST EXPECTED QUESTIONS FOR SBI CLERK)

**Q.21 Who amongst the following lives on the 2<sup>nd</sup> floor?**

- a. Gopal
- b. Govind
- c. Sona
- d. Mona
- e. Amit

**Q.22 Who amongst the following lives on the 1<sup>st</sup> floor?**

- a. Gopal
- b. Govind
- c. Sona
- d. Mona
- e. None of the above

Q. 23-25

एक विश्वविद्यालय के सांस्कृतिक उत्सव में सोमवार से शुरू होने वाले और रविवार को समाप्त होने वाले सप्ताह के अलग-अलग दिन सात अलग-अलग कार्यक्रम होते हैं - गायन प्रतियोगिता, बॉलीवुड नृत्य, पैनल चर्चा, कविता पाठ, नुक्कड़ नाटक, रॉक कॉन्सर्ट और अतिथि व्याख्यान - जरूरी नहीं कि इसी क्रम में हो।

नुक्कड़ नाटक और रॉक कॉन्सर्ट के बीच चार कार्यक्रम निर्धारित हैं। शनिवार को नुक्कड़ नाटक निर्धारित नहीं है। नुक्कड़ नाटक और गायन प्रतियोगिता के बीच एक कार्यक्रम निर्धारित है। नुक्कड़ नाटक के ठीक बाद बॉलीवुड नृत्य प्रतियोगिता निर्धारित है। कार्यक्रम पैनल चर्चा, कविता पाठ से ठीक पहले निर्धारित है। गुरुवार को कविता पाठ का कार्यक्रम नहीं है। रॉक कॉन्सर्ट के बाद अतिथि व्याख्यान निर्धारित है।

A  
L  
L  
T  
H  
E  
B  
E  
S  
T

A university cultural festival has seven different events - Singing competition, Bollywood Dance, Panel Discussion, Poetry Recital, Street Play, Rock Concert and Guest Speaker - not necessarily in the same order, on a different day of week starting from Monday and ending on Sunday of the same week. Four events are scheduled between the Street Play and Rock Concert. The Street Play is not scheduled on Saturday. One event is scheduled between the Street Play and Singing competition. The Bollywood Dance competition is scheduled immediately after the Street Play. The event Panel Discussion is scheduled immediately before the Poetry Recital. The Poetry Recital is not scheduled on Thursday. The Guest Speaker is scheduled after the Rock Concert.

**Q.23 Which of the following pair is Correct ?**  
निम्नलिखित में से कौन सा युग्म सही है?

- a. Poetry Recital - Saturday
- b. Guest Speaker - Tuesday
- c. All the given statement is correct
- d. Rock Concert - Friday
- e. Panel Discussion - Thursday

**Q.24 Four of the following five are alike in a certain way and hence form a group. Which of the following does not belong to the group?**

निम्नलिखित पाँच में से चार एक निश्चित तरीके से एक जैसे हैं और इसलिए एक समूह बनाते हैं। निम्नलिखित में से कौन सा समूह से संबंधित नहीं है?

- a. Street Play - Wednesday
- b. Bollywood Dance - Thursday
- c. Singing competition - Friday
- d. Panel Discussion - Saturday
- e. Rock Concert - Wednesday

**Q.25 If all the event order is reversed then who which of the following event is at the same place as before?**

यदि सभी घटनाओं का क्रम उलट दिया जाए तो निम्नलिखित में से कौन सी घटना पहले के समान स्थान पर होगी?

- a. Street Play
- b. Rock Concert
- c. Bollywood Dance
- d. Singing competition
- e. Panel Discussion

Q. 26-30

दस व्यक्ति दो समानांतर पंक्तियों में बैठे हैं जिनमें प्रत्येक में पांच व्यक्ति इस तरह बैठे हैं कि आसन्न व्यक्तियों के बीच समान दूरी है। पंक्ति 1 में: P, Q, R, S और T बैठे हैं और सभी उत्तर के सम्मुख हैं। पंक्ति 2 में: I, J, K, L और M बैठे हैं और सभी दक्षिण के सम्मुख हैं। पंक्ति 1 का प्रत्येक व्यक्ति पंक्ति 2 में ठीक एक व्यक्ति के सम्मुख है। T, J के सम्मुख व्यक्ति के दाईं ओर तीसरे स्थान पर बैठा है। J और K के बीच केवल एक व्यक्ति बैठा है। I, K के ठीक बाएं बैठा है। I के दाईं ओर बैठे व्यक्तियों की संख्या R के बाईं ओर बैठे व्यक्तियों की संख्या से एक अधिक है। R और P के बीच उतने ही व्यक्ति बैठे हैं जितने P और S के बीच में बैठे हैं। M, S के सम्मुख व्यक्ति का निकटतम पड़ोसी है। L और Q एक दूसरे के सम्मुख नहीं हैं।

A  
L  
L  
T  
H  
E  
B  
E  
S  
T

Ten persons are sitting in two parallel rows containing five persons each in such a way that there is an equal distance between adjacent persons. In row 1: P, Q, R, S and T are seated and all of them are facing north. In row 2: I, J, K, L and M are seated and all of them are facing south. Each person in row 1 faces exactly one person in row 2. T sits third to the right of the one who faces J. Only one person sits between J and K. I sit immediate left of K. The number of persons sitting to the right of I is one more than the number of persons sitting to the left of R. As many persons sit between R and P as between P and S. M is an immediate neighbour of the one who faces S. L and Q do not face each other.

**Q.26 Who among the following person sits at the end of the row?**

निम्नलिखित में से कौन-सा व्यक्ति पंक्ति के अंत में बैठा है?

- a. S
- b. L
- c. I
- d. J
- e. R

**Q.27 If all the persons are made to sit in alphabetical order from left to right within the row, then how many persons remain in the same position?**

यदि सभी व्यक्तियों को पंक्ति में बाएं से दाएं वर्णानुक्रम में बैठाया जाए, तो कितने व्यक्ति उसी स्थिति में रहेंगे?

- a. Three
- b. Five
- c. Two
- d. Four
- e. None

**Q.28 Who among the following pair of persons faces each other?**

निम्नलिखित में से कौन सा व्यक्ति युग्म एक दूसरे के सम्मुख है?

**I). PK                      II). QI                      III). JS**

- a. Only I
- b. Only II
- c. Only II and III
- d. Only I and II
- e. Only III



## PAPER HACKED (MOST EXPECTED QUESTIONS FOR SBI CLERK)

**Q29. If L and T interchange their positions, similarly M and S did the same, then who among the following person sits immediate left of the one who faces M?**

यदि L और T अपना स्थान बदल लेते हैं, इसी प्रकार M और S भी ऐसा ही करते हैं, तो निम्नलिखित में से कौन सा व्यक्ति M के सम्मुख व्यक्ति के तत्काल बाएं बैठा है?

- a. L
- b. T
- c. S
- d. Q
- e. No one

**Q.30 What is the position of K with respect to the final arrangement?**  
अंतिम व्यवस्था के संबंध में K का स्थान क्या है?

- a. K sits second from the right end
- b. K faces the one who sits immediate right of T
- c. K sits two places away from M
- d. K sits immediate left of L
- e. K sits at the extreme left end

Q. 31-35

आठ व्यक्ति - P, Q, R, S, T, U, V और W वर्गाकार मेज पर इस प्रकार बैठे हैं कि उन सभी का मुख केंद्र की ओर है। चार व्यक्ति मेज की भुजाओं के बीच में बैठे हैं और चार व्यक्ति मेज के कोने पर बैठे हैं। सभी जानकारी जरूरी नहीं कि उसी क्रम में हों। P, V के बाएं दूसरे स्थान पर बैठता है, जो मेज के एक कोने पर बैठता है। W, P के या तो तुरंत दाएं या फिर तुरंत बाएं बैठता है। S, R के बाएं दूसरे स्थान पर बैठने वाले व्यक्ति के विपरीत बैठता है। R मेज की भुजाओं के बीच में बैठता है। S न तो V का और न ही P का निकटतम पड़ोसी है। T, P या U में से किसी एक का निकटतम पड़ोसी है, लेकिन दोनों का नहीं। Q, U के बाएं दूसरे स्थान पर बैठता है।

A  
L  
L  
T  
H  
E  
B  
E  
S  
T

Eight persons - P, Q, R, S, T, U, V and W are sitting in the square table such that all of them are facing towards the center. Four persons are sitting in the middle of the sides of the table and four persons are sitting at the corner of the table. All the information is not necessarily in the same order. P sits second to the left of V, who sits at one of the corner of the table. W sits either to the immediate right or to the immediate left of P. S sits opposite to the one who sits second to the left of R. R sits in the middle of the sides of table. S is neither the immediate neighbor of V nor P. T is the immediate neighbor of either of P or U, but not the both. Q sits second to the left of U.

**Q.31 Four of the following five are alike in a certain way and hence form a group. Who among the following person does not belong to that group?**

निम्नलिखित पाँच में से चार एक निश्चित तरीके से एक जैसे हैं और इसलिए एक समूह बनाते हैं। निम्नलिखित में से कौन सा व्यक्ति उस समूह से संबंधित नहीं है?

- (a) S
- (b) The one who sits to the immediate right of V
- (c) The one who sits second to the right of W
- (d) W
- (e) Q

**Q.32 In which of the following combination both the persons are facing towards each other?**

निम्नलिखित में से किस संयोजन में दोनों व्यक्ति एक दूसरे की ओर मुख करके बैठे हैं?

- (a) UR
- (b) WS
- (c) PQ
- (d) TV
- (e) RP

**Q.33 Who among the following person sits opposite to U?**

निम्नलिखित में से कौन U के विपरीत बैठा है?

- (a) V
- (b) The one who sits second to the right of P
- (c) The one who sits third to the left of S
- (d) The one who sits to the immediate left of R
- (e) All of the above

**Q.34** If all the persons are arranged in alphabetical order in the clockwise direction with respect to P, then how many persons remain unchanged in their position (Excluding P)?

यदि सभी व्यक्तियों को P के संबंध में दक्षिणावर्त दिशा में वर्णमाला क्रम में व्यवस्थित किया जाए, तो कितने व्यक्ति अपनी स्थिति में अपरिवर्तित रहेंगे (P को छोड़कर)?

- (a) Three
- (b) Two
- (c) One
- (d) More than Three
- (e) None

**Q.35** Who among the following person sits opposite to the one who is third to the left of Q?

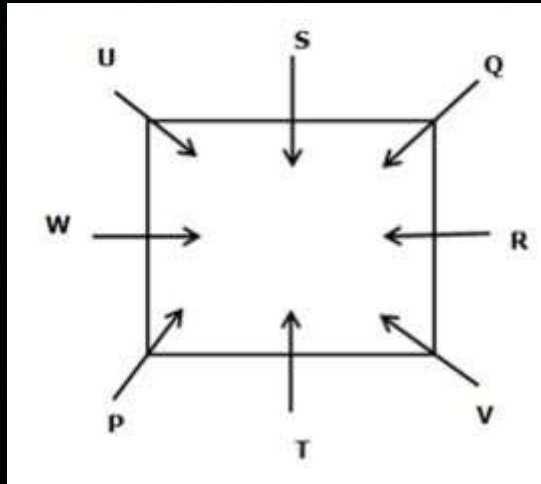
निम्नलिखित में से कौन सा व्यक्ति Q के बायीं ओर तीसरे स्थान पर बैठे व्यक्ति के विपरीत बैठा है?

- (a) The one who sits to the immediate right of W
- (b) P
- (c) W
- (d) The one who sits to the immediate left of U
- (e) T



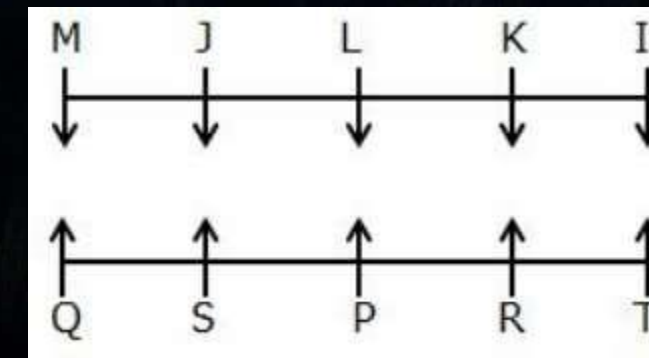
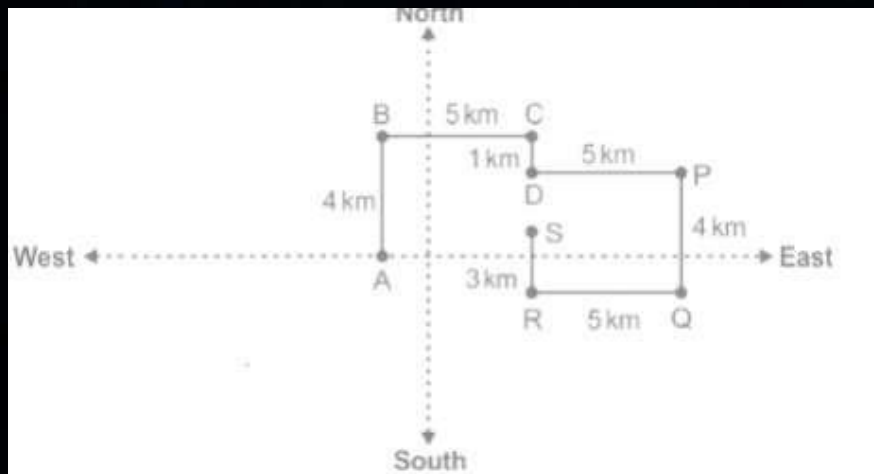
# PAPER HACKED (MOST EXPECTED QUESTIONS FOR SBI CLERK)

$K > S > Z > W(45) > H > C$



Events	Days
Street Play	Monday
Bollywood Dance	Tuesday
Singing competition	Wednesday
Panel Discussion	Thursday
Poetry Recital	Friday
Rock Concert	Saturday
Guest Speaker	Sunday

Floor	Person
8	Amit
7	Sohan
6	Govind
5	Mohan
4	Sumit
3	Sona
2	Gopal
1	Mona







# ENGLISH

**Directions (71-73):** In the following questions, a sentence is given with four highlighted words. Choose the option reflecting the word which is either misspelled or grammatically incorrect. If all the highlighted words are correct, choose option “All are correct” as your answer choice.

71.

The video of the vehicle that **ploughed** through the peaceful **procesion** of farmers in the Lakhimpur Kheri **district** is not very clear on the **identity** of the driver.

- (a) ploughed
- (b) procesion
- (c) district
- (d) identity
- (e) All are correct

72.

The **face-of** between the Indian and Nepalse troops **happened** last week due to the recent KIIT controversy after a few Nepalse **troops** crossed the border in Arunachal Pradesh's Tawang and were **detained** by Indian soldiers.

- (a) face-of
- (b) happened
- (c) troops
- (d) detained
- (e) All are correct

73.

Chaos **unfolded** this morning at the Mumbai airport which saw a **massively** rush of passengers who got **stuck** in long queues with many **missing** flights.

- (a) unfolded
- (b) massively
- (c) stuck
- (d) missing
- (e) All are correct

**Directions (74-75):** In each of the questions given below four words are given in bold. These four words are may not be in their correct position. The sentence is then followed by options with the correct combination of words that should replace each other in order to make the sentence grammatically and contextually correct. Find the correct combination of the words that replace each other.

74.

Financial Inclusion is a relatively new **dynamic** (A) concept in India that aims to change this **socio-economic** (B) by providing financial services at **afford** (C) costs to the underprivileged, who might not otherwise be aware of or able to **affordable** (D) these services.

- (a) B-C
- (b) A-B
- (c) A-B & C-D
- (d) A-C & B-D
- (e) No interchange required

75.

The Business Correspondents (BC's) shall be carrying **handheld** (A) terminals like Tablets (GSM enabled) **thermal** (B) with portable **biometric** (C) scanner, smart card swipe machines as well as **coupled** (D) Bluetooth printers for carrying out their online banking activities on the field.

- (a) A-D & B-C
- (b) A-C & B-D
- (c) A-D
- (d) B-D
- (e) No interchange required

**Directions (76-77):** A word has been given in each question and has been used in the sentences given below. Identify the statements where the word has been used in a contextually and grammatically correct manner. If the word has been used correctly in all the statements, mark (e), “All of these”, as your answer.

76.

**Turmoil**

(I) The state of Uttar Pradesh faced political **turmoil** after the election results were displayed.

(II) Electricity is generated from **thermal** power plant

(III) Indian students are in a **turmoil** after India added to UK's red travel ban list

(a) Only (I) & (II)

(b) Only (II)

(c) Only (III) & (II)

(d) Only (I)

(e) Only (I) and (III)

77.

**Deliberately**

(I) A number of persons **deliberately** obstructed their passage with a barricade of country carts

(II) India's current low carbon footprint is a consequence of the **deliberately** poverty

(III) Both firms have **deliberately** that the government provide additional funds to expand manufacturing

(a) Only (I) & (II)

(b) Only (II)

(c) Only (III) & (II)

(d) Only (I)

(e) Only (I) and (III)

**Directions (78):** In the question given below few sentences are given which are grammatically correct and meaningful. Connect them to make sentence in the best possible way without changing the intended meaning. Choose the best possible combination as your answer accordingly from the options to form a correct, coherent sentence.

78.

**Column I**

(A) They got the list of names and addresses of rejected

(B) The High Court will resume complete physical functioning

(C) two men were arrested for allegedly

**Column II**

(D) cheating buyers of industrial plots

(E) but his application form was rejected

(F) which was restricted due to the COVID-19 pandemic

(a) (A)-(E)

(b) (A)-(F) and (C)-(D)

(c) (C)-(D) and (B)-(E)

(d) (B)-(F) and (C)-(D)

(e) None of these

**Directions (79-81):** In the following questions, a sentence is divided into four parts. Choose the part of the sentence which may contain a grammatical error in it. If all the parts of the sentences are grammatically correct and contextually meaningful, choose option “No error” as your answer choice.

79.

The fugitive **(A)** / hopes he would be able to cross **(B)** / the border before the police **(C)** / caught up with him. **(D)**.

(a) A

(b) B

(c) C

(d) D

(e) No error

80.

On the movies, (A)/ we watched a (B)/ behind-the-scenes sneak peek (C)/ at how the movie was filmed. (D)

- (a) A
- (b) B
- (c) C
- (d) D
- (e) No error

81.

As the children heard the airplane, **(A)**/ they looked up to see **(B)**/ the big Boeing 747 flying **(C)**/ within inches of the treetops. **(D)**

(a) A

(b) B

(c) C

(d) D

(e) No error

**Directions (82-83):** Each question below has one blank, which is indicating that something has been omitted. Find out which option can be used to fill up the blank in the sentence to make it grammatically as well as contextually correct.

82.

The downturn in the Korean economy has been a \_\_\_\_\_ for ESL schools here because they depended so much on their Korean clientele.

- (a) unadorned
- (b) peculiar
- (c) dominion
- (d) catastrophe
- (e) None of the above

83.

**Because of the church's treatment of Galileo, many people suggest that religion is \_\_\_\_\_ with science.**

- (a) decree**
- (b) incompatible**
- (c) facilitate**
- (d) ornate**
- (e) None of the above**

**Directions (84-85):** In the following question, four sentences are given which may be grammatically and contextually incorrect. You need to find the one which has no error and mark that as your answer. If all the given sentences are incorrect then mark option (e) i.e. 'all are incorrect' as your answer.

84.

**(a)** The planet Mars was once moist and had surface water, but the water disappears about 3 1/2 billion years ago, leaving the planet dry and cold.

**(b)** Male killer whales general live to a maximum of 50 years, while females may reach 70-80 years of age.

**(c)** In order to accelerate the learning of a second language, we need to be motivated, and we need to have clear goals of what we hope to achieve.

**(d)** The defense lawyer in the case is asking for a complete acquittal of his client because the prime witness in the case was pressured into testifying against him from police.

**(e)** All are incorrect

85.

- (a)** Members of the Opposition want the government to review its aid allocation for Haiti in response to a recent report on human rights abuses in the island nation.
- (b)** Youth activist Craig Kielburger once observed that the opinions of young people is seldom considered even when there is an issue that affects them directly.
- (c)** Marcel Proust observed that the real voyage of discover consists not in seeking new landscapes, but in having new eyes.
- (d)** Many Buddhist temples in Japan are run like corporations and invest in lucrative businesses such as running apartment buildings and golf courses.
- (e)** All are incorrect

**Directions (86-88):** In the question given below, a grammatically correct and meaningful sentence is given which is divided into four parts namely (A), (B), (C) and (D). Arrange these four parts to make a contextually and grammatically meaningful sentence.

86.

(A) when the principal announced he

(B) would be leaving the school after thirty

(C) poignant silence in the auditorium

(D) years, there was a

(a) BDCA

(b) BACD

(c) ADCB

(d) ABDC

(e) No rearrangement required

87.

(A) Gail found the real

(B) what she learned in  
academia

(C) be quite different from

(D) world of business to

(a) ABDC

(b) ADCB

(c) CABD

(d) DBCA

(e) No rearrangement  
required

88.

(A) be spent on purchasing

(B) academic funds can  
only

(C) things for the classroom

(D) such as paper and  
pencils

(a) BDCA

(b) BCDA

(c) BACD

(d) ADCB

(e) No rearrangement  
required

**Directions (89-93):** In the following passage some words have been deleted. Fill in the blanks with the help of the alternatives given. Select the most appropriate option for each blank.

Schools are critical institutions for any given society. In specific communities, they form the \_\_\_\_\_(89)\_\_\_\_\_ and the fundamental building blocks for society. As such, given their enforcement of dress codes, it is safe to say that going \_\_\_\_\_(90)\_\_\_\_\_, institutions like these will keep the dress code much alive decades into the 21st century.

Once again, the move to change the dress code in learning institutions is not bound to happen, any time soon, meaning the dress code, as people know it today, is an edge to last for two years to come. It is also important to understand the \_\_\_\_\_(91)\_\_\_\_\_ that raising children with a specific dress code throughout their learning years has on them, and their outlook towards dress codes. On one hand, some ends up not liking dress codes altogether and set out not to live by the norm, whether society likes it or not. Some appreciate the discipline that comes with observing a specific dress code for all those years, with the \_\_\_\_\_(92)\_\_\_\_\_ that it brings to people in the same environment (Bagçeci, Deliçay & Yildirim, 2017). These are everyone who is out to respect dress codes and observe them, be it in their areas of work, places of worship or any other place. Furthermore, these individuals should they be blessed with kids, are bound to raise them just like they were raised, thereby \_\_\_\_\_(93)\_\_\_\_\_ that the dress code is not dead and does not die for generations to come.

89.

Schools are critical institutions for any given society. In specific communities, they form the \_\_\_\_\_(89)\_\_\_\_\_ and the fundamental building blocks for society. As such, given their enforcement of dress codes, it is safe to say that going \_\_\_\_\_(90)\_\_\_\_\_, institutions like these will keep the dress code much alive decades into the 21st century.

(a) casual

(b) head

(c) cornerstones

(d) daring

(e) miniscule

90.

Schools are critical institutions for any given society. In specific communities, they form the \_\_\_\_\_(89)\_\_\_\_\_ and the fundamental building blocks for society. As such, given their enforcement of dress codes, it is safe to say that going \_\_\_\_\_(90)\_\_\_\_\_, institutions like these will keep the dress code much alive decades into the 21st century.

(a) leisurely

(b) forward

(c) strong

(d) slowly

(e) smoothly

91.

Once again, the move to change the dress code in learning institutions is not bound to happen, any time soon, meaning the dress code, as people know it today, is an edge to last for two years to come. It is also important to understand the \_\_\_\_\_(91)\_\_\_\_\_ that raising children with a specific dress code throughout their learning years has on them, and their outlook towards dress codes. On one hand, some ends up not liking dress codes altogether and set out not to live by the norm, whether society likes it or not.

(a) impact

(b) imagination

(c) zeal

(d) question

(e) advertisement

92.

Some appreciate the discipline that comes with observing a specific dress code for all those years, with the \_\_\_\_**(92)**\_\_\_\_ that it brings to people in the same environment (Bagçeci, Deliçay & Yildirim, 2017). These are everyone who is out to respect dress codes and observe them, be it in their areas of work, places of worship or any other place. Furthermore, these individuals should they be blessed with kids, are bound to raise them just like they were raised, thereby \_\_\_\_**(93)**\_\_\_\_ that the dress code is not dead and does not die for generations to come.

**(a) Joy**

**(b) Unhappiness**

**(c) Anxiety**

**(d) Benefits**

**(e) equality**

93.

Some appreciate the discipline that comes with observing a specific dress code for all those years, with the \_\_\_\_**(92)**\_\_\_\_ that it brings to people in the same environment (Bagçeci, Deliçay & Yildirim, 2017). These are everyone who is out to respect dress codes and observe them, be it in their areas of work, places of worship or any other place. Furthermore, these individuals should they be blessed with kids, are bound to raise them just like they were raised, thereby \_\_\_\_**(93)**\_\_\_\_ that the dress code is not dead and does not die for generations to come.

**(a) ensuring**

**(b) accurate**

**(c) blaming**

**(d) suggesting**

**(e) instilling**

**Directions (94-100):** Read the passage carefully and answer the questions given below it. Certain words/ phrases are given in bold to help you locate them while answering some of the questions.

**94. Why Veerka planned to get honey from the jungle according to the given passage?**

**95. Why the sloth bear could not hurt Veerka in the jungle while he was on the mahua tree?**

**96. Which of the following is incorrect regarding the boy Veerka as per the passage?**

**(i) Veerka was stopped by the village doctor when he was passing by the old woman's hut**

**(ii) Veerka's hut was very smelly which smelled of mud, smoke and sweat**

**(iii) Veerka was the eldest son of a poor farmer**

**97. Why did the village doctor suggest Veerka to keep giving the old woman wild honey?**

98. Identify the correct statement(s) regarding Badi Bi as mentioned in the passage?

(i) Badi B was the youngest women of the village

(ii) The boy Veerka was neighbor of Badi B

(iii) Badi B fell ill since last one month

99. Which of the following is the most opposite to word '**wrapped**' as highlighted in the given passage?

100. Which of the following is the most similar to word '**Wiry**' as highlighted in the given passage?



## PAPER HACKED (MOST EXPECTED QUESTIONS FOR SBI CLERK)

“There is a dusty road up the hills which goes nowhere...” was the only thing Badi Bi would say. But she didn’t say it anymore. She had been lying on her cot, staring at her mud-tiled ceiling, for the last three days. No one knew how old Badi bi was. She had been there since Veerka’s father was born. Bapu, Veerka’s father, said that her sons had gone to the city and never came back. The villagers helped her now and then. Veerka had dark **wiry** limbs and deep set eyes which seemed to be looking inside him rather than out. He was the eldest son of a poor farmer, whose hut smelled of three smells: smoke, sweat and honey. Having no other helping hand, his father would take him to the jungles for wild honey hunting in the flowering season to give his family sustenance. Being a neighbor of her, Veerka was fond of the bent old woman. she gave him mango slices covered with salt that he so loved. But as she grew older and couldn’t cut mangoes, Veerka brought her a little bowl of honey now and then. She would just grin happily and say, “There is a dusty road....”



## PAPER HACKED (MOST EXPECTED QUESTIONS FOR SBI CLERK)

That day, Veerka stopped the village doctor coming from Badi bi's house as he passed his hut. Veerka asked the doctor about the condition of old woman. The doctor ran his fingers through his beard and said, "Not many days left, keep giving her wild honey." Honey was supposed to have healing powers and it gave a lot of energy. But all of their stock was over. Veerka went around the village to every hut looking for honey but no one had any left. So Veerka planned to get honey from the jungle. He had never gone to the jungle alone, let alone on the risky task of getting honey. That night, he stood near the mahua tree which housed a beehive of large bees. He tried not to get feared in the jungle. He **wrapped** his face in cloth. Holding the sharp pole, bucket, rope and burning torch, which was made to emit more smoke than fire, he reached the branch of the beehive. Smoke stung his eyes and a few bees stung his hands. Once he had smoked away the bees, he hung the bucket below the hive and started cutting it with the pole.



## PAPER HACKED (MOST EXPECTED QUESTIONS FOR SBI CLERK)

Suddenly he heard a loud puffing sound which was of a sloth bear climbing up the tree! The short-sighted bear had not seen Veerka and had climbed up the tree to have honey, his favourite food. After all, bees couldn't sting bears through their thick fur. Now he could neither jump down the tall tree nor fight the bear. He expected to be pawed any moment when he heard the bear wailing. While attacking Veerka, bear had caught hold of the torch instead. Howling like a banshee, the bear rushed down the tree and then into the night jungle.

Veerka hurried to the village and reached Badi Bi's hut. Veerka gently lifted up her head and trickled some honey down her throat. Veerka kept clutching the honey pot as his eyes welled with tears. Suddenly he saw a movement through his blurry eyes. Badi bi had turned her head towards them. Her face slowly broke in a toothless grin as she said, "There is a dusty road up the hills which goes nowhere...".

94.

**Why Veerka planned to get honey from the jungle according to the given passage?**

- (a) Because Badi Bi told him to bring honey from the jungle
- (b) As his whole honey stock was over and he did not want to borrow it from someone.
- (c) Because the village doctor advised him to bring wild honey directly from jungle
- (d) As he was unable to get honey from any other place in the village
- (e) Because he wanted to visit jungle for adventure because his father was out of the village

95.

**Why the sloth bear could not hurt Veerka in the jungle while he was on the mahua tree?**

- (a) Because the bear already saw him from distance and got frightened of his burning torch**
- (b) Because the bear could not see him on the tree**
- (c) Because the bear got hold of burning torch while it was attacking Veerka**
- (d) Because Veerka acted dead in front of the bear**
- (e) Because got stung by group of bees and could not climb the tree**

96.

**Which of the following is incorrect regarding the boy Veerka as per the passage?**

**(i) Veerka was stopped by the village doctor when he was passing by the old woman's hut**

**(ii) Veerka's hut was very smelly which smelled of mud, smoke and sweat**

**(iii) Veerka was the eldest son of a poor farmer**

**(a) Only (i)**

**(b) Only (ii)**

**(c) Only (iii)**

**(d) Both (i) and (iii)**

**(e) Both (i) and (ii)**

97.

**Why did the village doctor suggest Veerka to keep giving the old woman wild honey?**

- (a) Honey was the favourite food of Badi B**
- (b) Due to the healing powers of honey**
- (c) The doctor could not arrange any other medicine**
- (d) The whole village believed that honey can save anyone**
- (e) None of the above**

98.

**Identify the correct statement(s) regarding Badi Bi as mentioned in the passage?**

**(i) Badi B was the youngest women of the village**

**(ii) The boy Veerka was neighbor of Badi B**

**(iii) Badi B fell ill since last one month**

**(a) Only (i)**

**(b) Only (ii)**

**(c) Only (iii)**

**(d) Both (i) and (ii)**

**(e) Both (ii) and (iii)**

99.

Which of the following is the most opposite to word '**wrapped**' as highlighted in the given passage?

- (a) reveal
- (b) heaving
- (c) blowing
- (d) wheezing
- (e) None of these

100

Which of the following is the most similar to word '**Wiry**' as highlighted in the given passage?

- (a) Plump
- (b) Ponderous
- (c) Weak
- (d) Lean
- (e) None of these



**PRACTICE SET**

**Directions (101-103):** Read the passage carefully and answer the questions given below it. Certain words/ phrases are given in bold to help you locate them while answering some of the questions.

101

In the **brilliance** (A), the artist captured the **sunset** (B) of the **colors** (C) with remarkable **painting** (D).

(a) BDAC

(b) DCBA

(c) BADC

(d) CADB

(e) No rearrangement required

102

The **salt** (A) called for a dash of **recipe** (B) to balance the **sugar** (C) in the **flavors** (D).

(a) BACD

(b) CDDBA

(c) BADDC

(d) CADDB

(e) No rearrangement required

103

**Chocolate** (A) is essential to maintaining a healthy **diet** (B), and avoiding **exercise** (C) can lead to a significant increase in **fruits** (D) and vegetables consumption.

(a) BDAC

(b) CBAD

(c) BADC

(d) CADB

(e) No rearrangement required

**Directions (104-108):** In the passage five coherent sentences are given, which are not arranged in meaningful order. Rearrange these sentences in the correct order to answer the following questions.

**(A)** Overall, irrigation methods vary based on factors like crop type, climate, and water availability, demonstrating their adaptability in sustaining global agriculture.

**(B)** Various types of irrigation play crucial roles in agricultural practices, ensuring efficient water distribution to crops.

**(C)** For example, Surface irrigation methods, such as furrow and flood irrigation, involve the controlled flow of water over fields.

**(D)** Drip irrigation, on the other hand, delivers water directly to the plant root zone, conserving water and reducing evaporation.

**(E)** Lastly, the sprinkler irrigation, it mimics natural rainfall by dispersing water through pressurized systems.

104

Which of the following should be the **THIRD** sentence after rearrangement?

(a) A

(b) B

(c) C

(d) D

(e) E

105

Which of the following should be the **FIRST** sentence after rearrangement?

(a) A

(b) B

(c) C

(d) D

(e) E

106

Which of the following should be the **FOURTH** sentence after rearrangement?

(a) A

(b) B

(c) C

(d) D

(e) E

107

Which of the following should be the **SECOND** sentence after rearrangement?

(a) A

(b) B

(c) C

(d) D

(e) E

108

Which of the following should be the **FIFTH** sentence after rearrangement?

- (a) A
- (b) B
- (c) C
- (d) D
- (e) E

**Directions (109-113):** A few sentences are provided in the following questions, each with a phrase highlighted in bold. There may or may not be an error in the highlighted phrase. The erroneous phrase can be replaced with one of the given alternatives. Choose "No replacement required" as your response if the highlighted phrase is correct.

109

The company's commitment to sustainability is **evidence in its efforts** to reduce its carbon footprint and go green.

- (a) evidence in its affords
- (b) evident in its affords
- (c) evident in its efforts
- (d) obviously in its efforts
- (e) No replacement required

110

The manager's ability to handle diverse tasks simultaneously is one of his **most essential quality**.

- (a) most essential qualities
- (b) mostly essential qualities
- (c) most dispensable qualities
- (d) most ingrained quality
- (e) No replacement required

111

The new software update aims to **rectify any existing bugs and enhancing** the overall user experience.

- (a) project some existing bugs and enhancing
- (b) embeds any existing bugs and develops
- (c) secure any existing bugs and constructing
- (d) fix any existing bugs and enhances
- (e) No replacement required

112

The players' performance was not up to the mark, and **they need to put on** more hard work.

- (a) they are looking for
- (b) they should need to
- (c) they needs to
- (d) they demanded for
- (e) No replacement required

113

His dedication to the project was **really** **perpetuate to a long** the quality and timeliness of the deliverables.

- (a) very vulnerable hence it
- (b) clearly visible in his project
- (c) so immense as it reflects
- (d) meeting all the deadlines
- (e) No replacement required

**Directions (114-115):** In each of the following sentences there are two blank spaces. Below each sentence, there are pair of words given in each option. Find out which pair of words can be filled up in the blanks in the sentence in the same sequence to make the sentence grammatically correct and meaningfully complete.

114

The \_\_\_\_\_ author received a standing ovation at the literary festival, proving his immense \_\_\_\_\_ among readers.

- (a) decent, activity
- (b) prominent, popularity
- (c) transparent, diversity
- (d) competent, destiny
- (e) turbulent, curiosity

115

**The witness provided an \_\_\_\_\_ account of the incident, fueling \_\_\_\_\_ among the investigators.**

- (a) indistinct, suspicion**
- (b) compact, erosion**
- (c) exact, vibration**
- (d) abstract, eruption**
- (e) conceit, decision**

**Directions (116):** There are two different sentences with a blank space in each question. Choose the word from the given options which fits into both the blanks appropriately adding a proper and logical meaning to the sentences.

(I) Her \_\_\_\_\_ disregard for the rules not only shocked her peers but also challenged the very foundation of the institution's traditions.

(II) Despite the risks, he made a \_\_\_\_\_ decision to venture into the unknown, his courage shining like a beacon in the face of adversity.

- (a) weaken
- (b) demure
- (c) genteel
- (d) brazen
- (e) mousy

**Directions (117):** In the following questions two columns are given containing three sentences/phrases each. A sentence/phrase from the first column may or may not connect with another sentence/phrase from the second column to make a grammatically and contextually correct sentence. Each question has five options, four of which display the sequence(s) in which the sentences/phrases can be joined to form a grammatically and contextually correct sentence. If none of the options given forms a correct sentence after combination or none of them connects, mark “None of the above” as your answer.

117

**COLUMN I**

(A) Researchers nationwide are

(B) Birds chirped loudly, filling

(C) Average yield is a matter of concern

**COLUMN II**

(D) face conditions of droughts and floods.

(E) and capacity building of these seeds.

(F) assessing various seed varieties.

(a) A-D & B-E

(b) C-F

(c) A-F

(d) B-D & C-E

(e) None of the above

118

**COLUMN I**

(A) The garden bloomed with a riot of  
(B) Dr. Smith explains the surge in heart attacks  
(C) The mountain stood tall, covered

**COLUMN II**

(D) among those in their forties.  
(E) under pineapple cultivation in the State  
(F) a livelihood through plantations.

(a) B-D

(b) A-F & B-E

(c) C-D & B-F

(d) A-E

(e) None of the above

**Directions (119-20):** In each of the questions given below two phrases have been given. Following the two phrases five connectors have been given. Find out which of the following connectors is the most suitable to connect the phrases to make a meaningful sentence.

119

**(I) She had prepared extensively for the interview**  
**(II) She found herself nervous and stumbling over her words.**

**(a) yet**

**(b) henceforth**

**(c) because**

**(d) consequently**

**(e) since**

**(I) The concert tickets were expensive**

**(II) We decided to attend the concert instead**

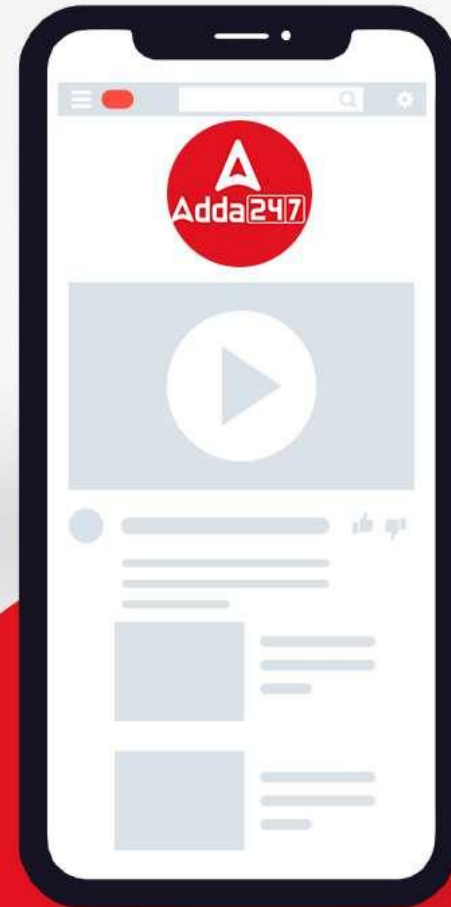
**(a) so**

**(b) while**

**(c) therefore**

**(d) as a result**

**(e) but**



**SUBSCRIBE NOW**

**Adda247**

**YouTube Channel**

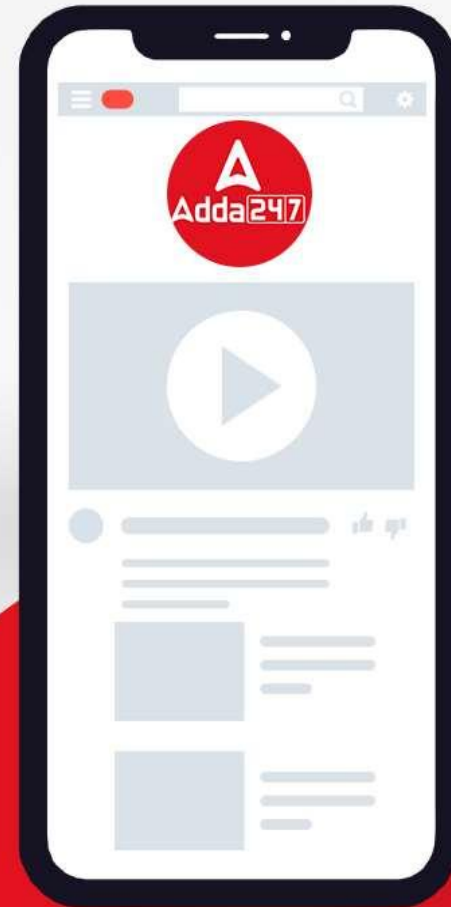




# PAPER HACKED (MOST EXPECTED QUESTIONS FOR SBI CLERK)

## ANSWER KEY

<b>101. b</b>	<b>102. a</b>	<b>103. b</b>	<b>104. d</b>	<b>105. b</b>	<b>106. e</b>	<b>107. c</b>	<b>108. a</b>
<b>109. c</b>	<b>110. a</b>	<b>111. d</b>	<b>112. e</b>	<b>113. c</b>	<b>114. b</b>	<b>115. a</b>	<b>116. d</b>
<b>117. c</b>	<b>118. a</b>	<b>119. a</b>	<b>120. e</b>				



**SUBSCRIBE NOW**

**Adda247**

**YouTube Channel**